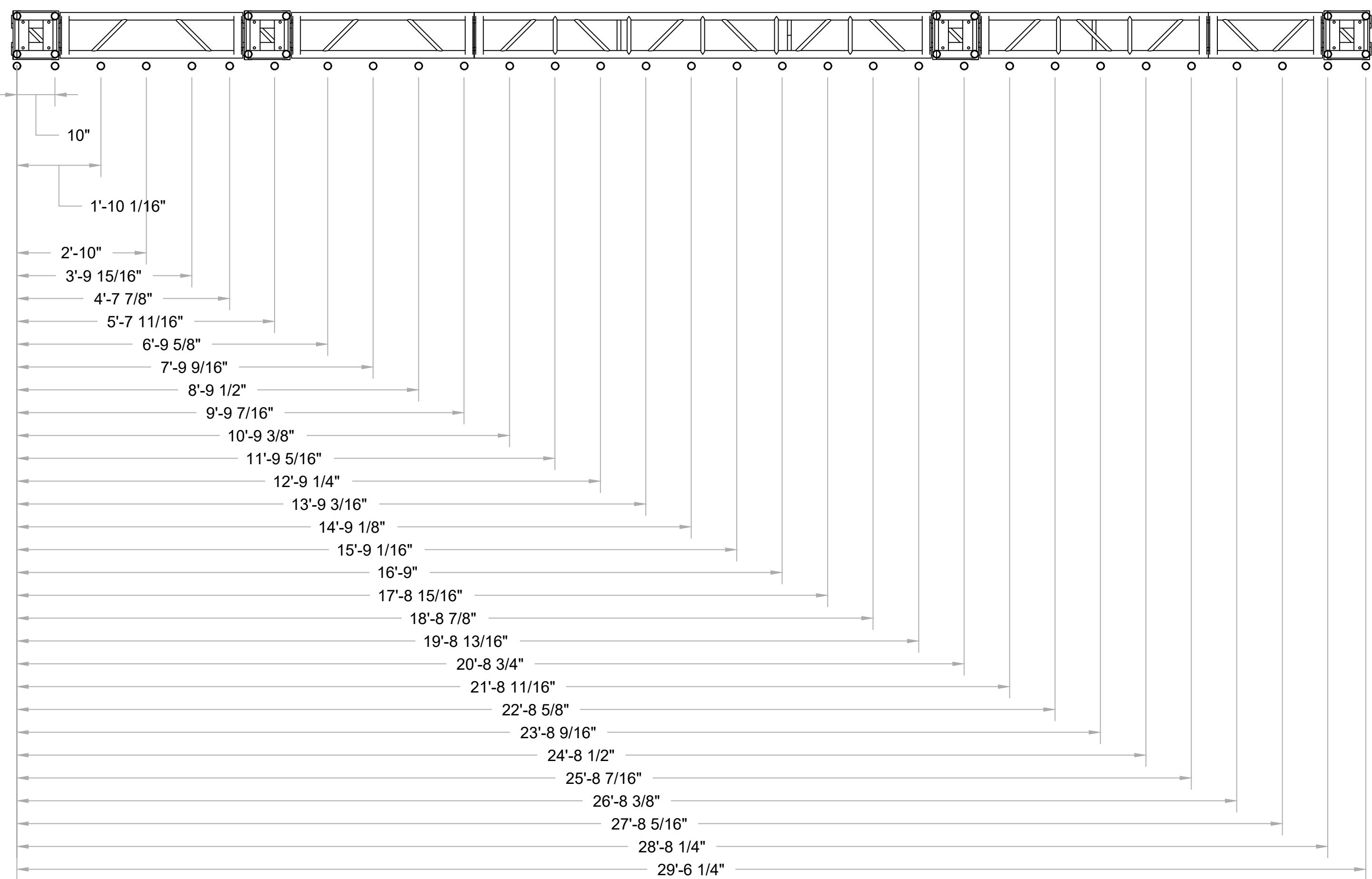
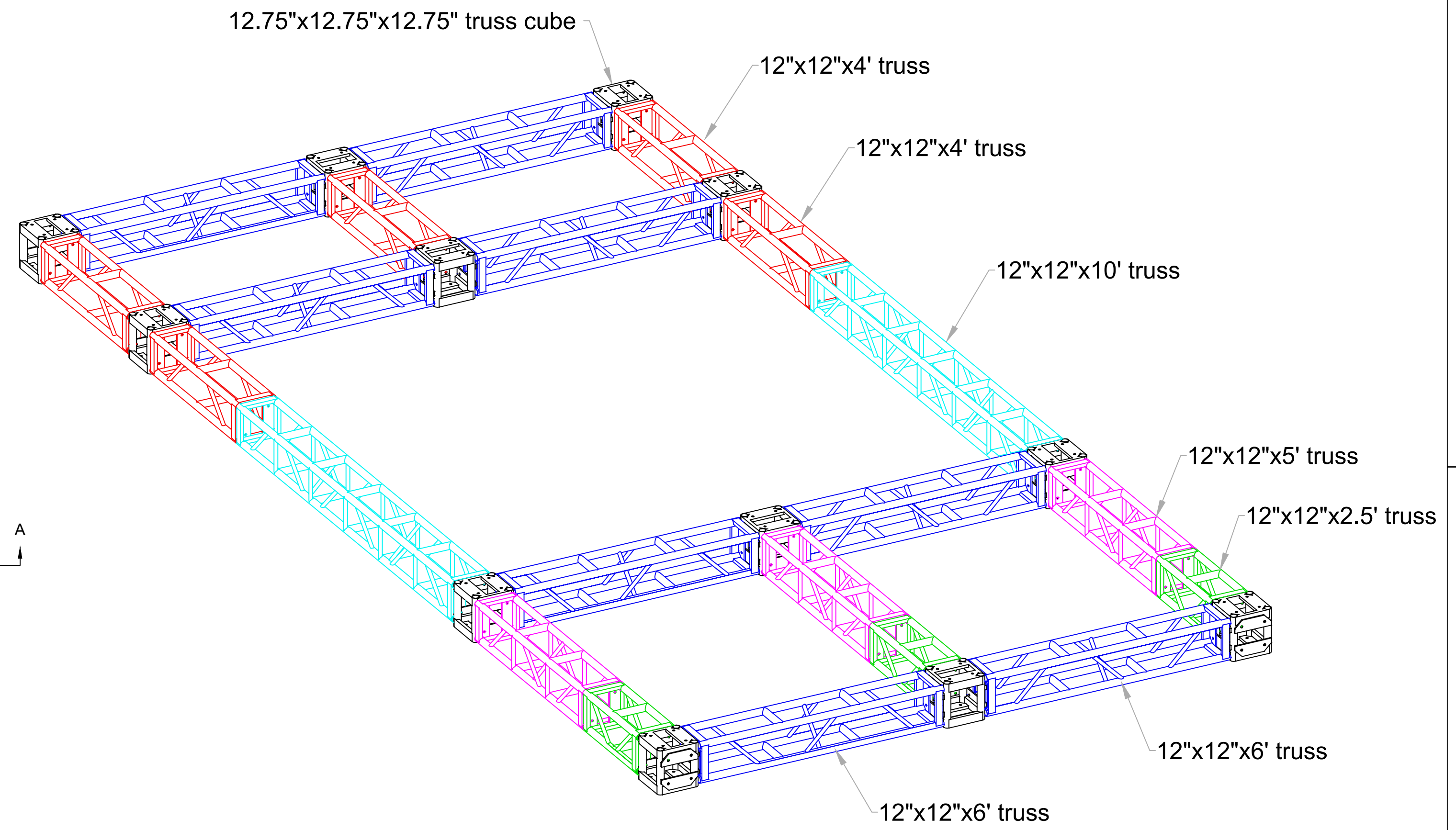


1 TRUSS AND PIPE STRUCTURE W/O HARDWARE - TOP VIEW
Scale: 1/2" = 1'-0"



2 SECTION A-A
SCALE 1/2" = 1'-0"



3 TRUSS ONLY - FRONT ISO VIEW
Scale: NTS

Dimensions are from the center of the last pipe on the truss to the center of the other pipes; it is important to know that there is ABSOLUTELY NO standardized spacing between pipes

OTHER ITEM TYPES					
Qty	Part Number	Description	Length	Width	Color
2	TRUSS 12 BOX 10FT	TRUSS 12 BOX 10FT	10'-0"	1'-0"	Teal
8	TRUSS 12X12X6FT	TRUSS 12X12X6FT	6'-0"	1'-0"	Blue
3	TRUSS 12X12X5FT	TRUSS 12X12X5FT	5'-0"	1'-0"	Magenta
5	TRUSS 12X12X4FT	TRUSS 12X12X4FT	4'-0"	1'-0"	Red
3	TRUSS 12X12X2FT6IN	TRUSS 12X12X2FT6IN	2'-6"	1'-0"	Green
12	TRUSS12.75X12.75CU	TRUSS 12.75X12.75 CUBE	1'-0 3/4"	1'-0 3/4"	Black