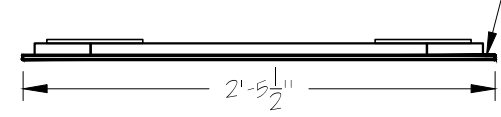
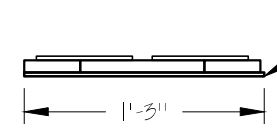
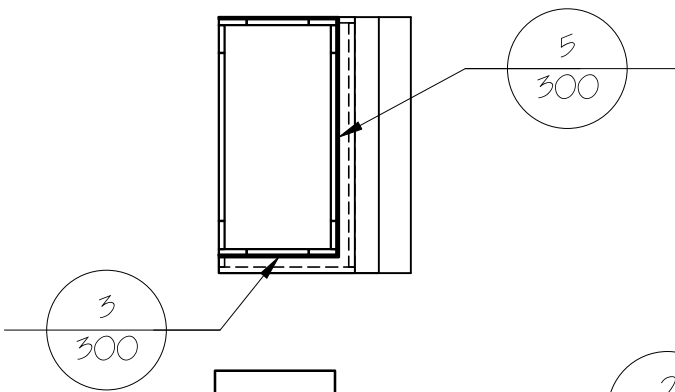


NOTES:
 GROUT LINES IN BRICK BOARD MUST MATCH UP.
 CUT CORNERBLOCKS AND KEYSTONES FROM $\frac{1}{4}$ " PLYWOOD.

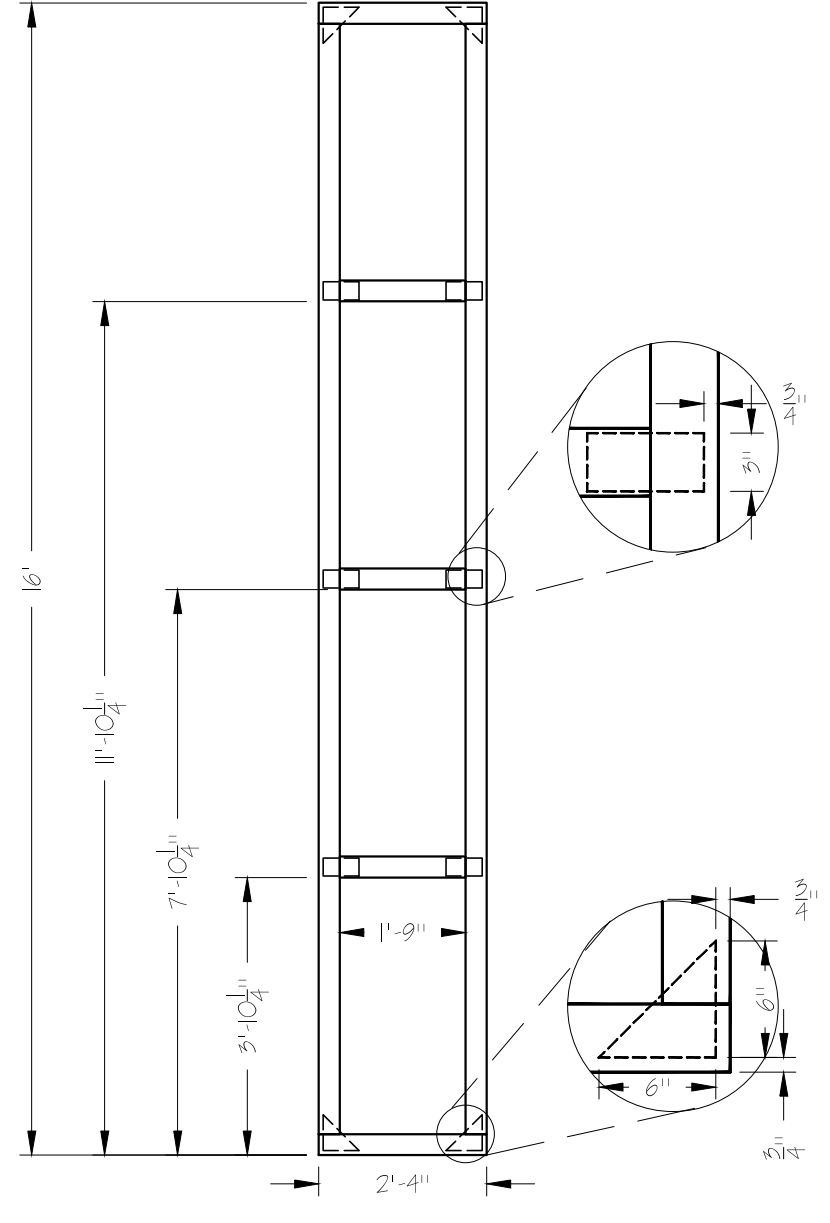
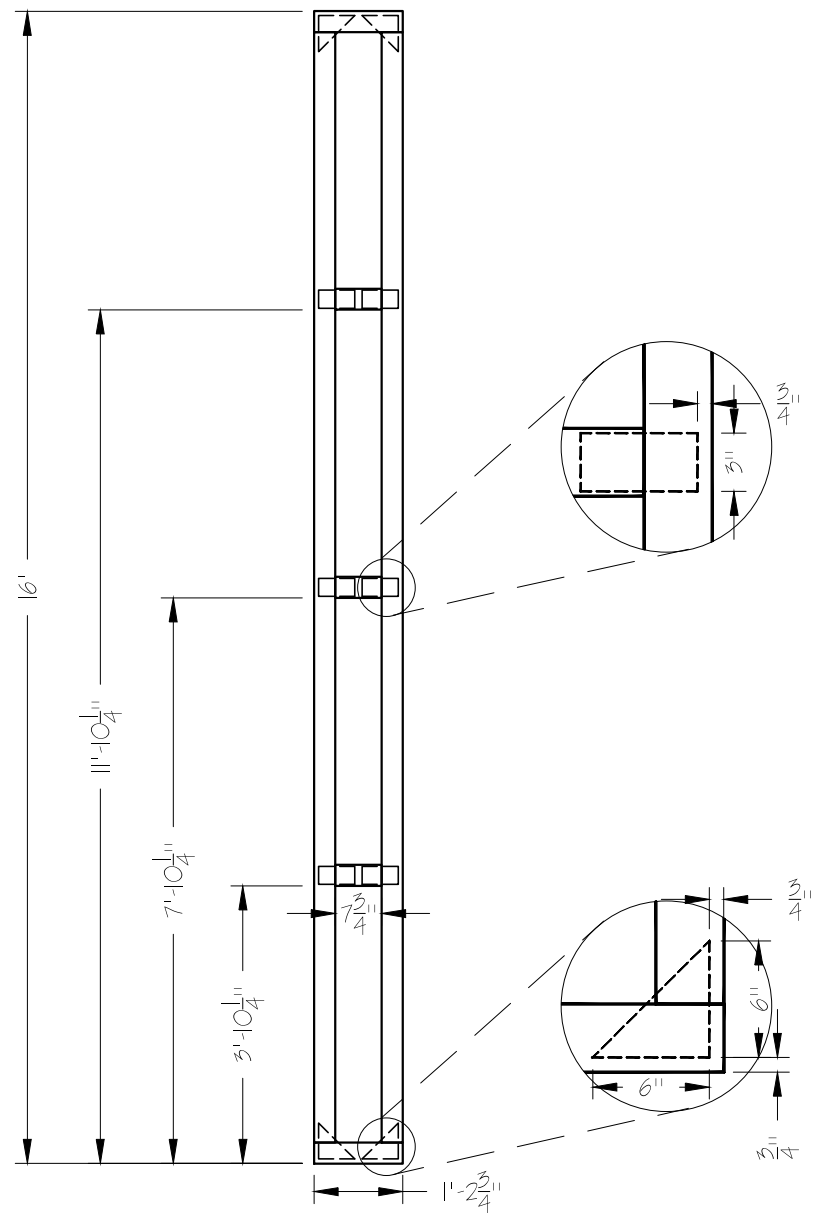
BUILD 4 (2 WITH FACING AND 2 WITHOUT FACING)
 BRICK BOARD OVERHANGS $\frac{3}{4}$ " ON BOTH SIDES OF FRAME

BRICK BOARD OVERHANGS $\frac{1}{4}$ " ON ONE SIDE OF FRAME REVERSE AND REPEAT!



2
300
COLUMN FRAMING - TOP VIEW
1" = 1'-0"
BUILD FOUR (4), TWO (2) ARE REVERSE AND REPEAT.

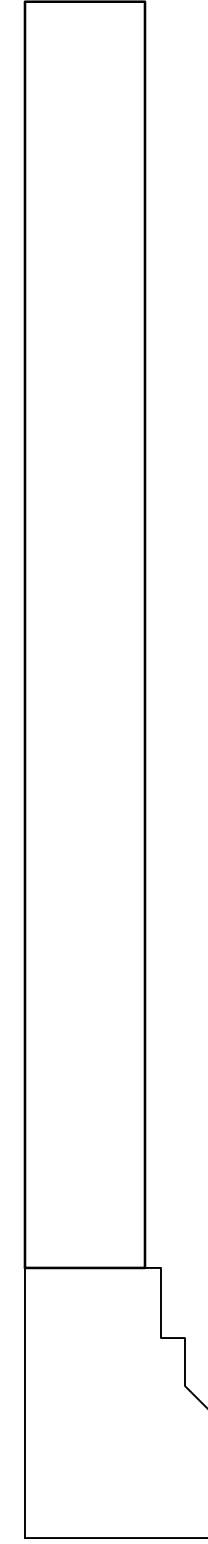
4
300
COLUMN FRAMING (CONT.) - TOP VIEW
1" = 1'-0"
BUILD FOUR (4), TWO (2) HAVE FACING, TWO (2) DO NOT.



3
300
COLUMN FRAMING - FRONT VIEW
3/8" = 1'-0"
FACING NOT INCLUDED FOR CLARITY.
BUILD FOUR (4).

5
300
COLUMN FRAMING (CONT.) - FRONT VIEW
3/8" = 1'-0"
FACING NOT INCLUDED FOR CLARITY.
BUILD FOUR (4).

1
300
COLUMN - FRONT AND TOP VIEWS
1/2" = 1'-0"
BUILD TWO (2), ONE IS REVERSE AND REPEAT.



Director: JEREMY WILLIAMS
 Scenic Designer: JEFF KMIEC
 Technical Director: PHIL BRULOTTE
 Assistant Technical Director: ELISE MASUR
 Scale: AS SHOWN

HAMLET
 COLUMNS

Plate Number:
300