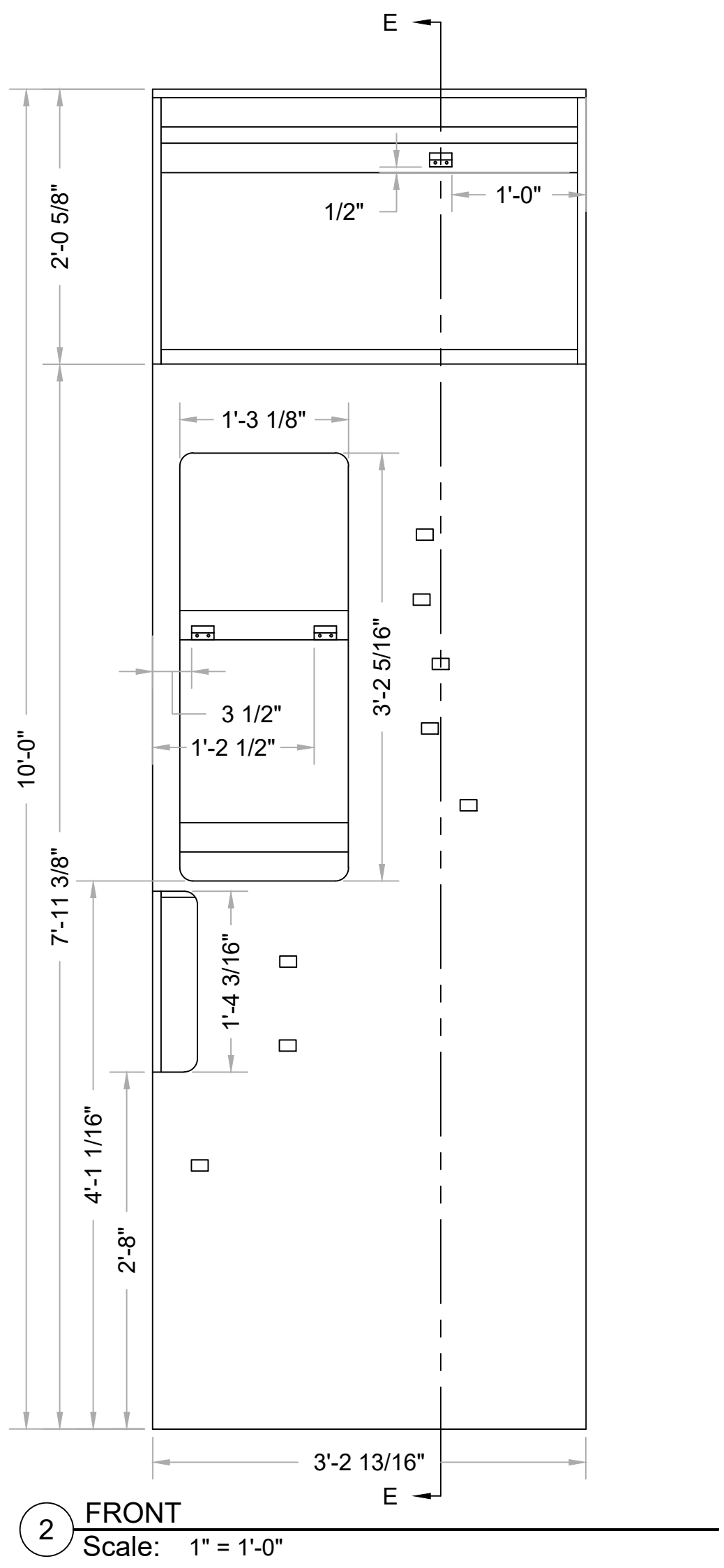
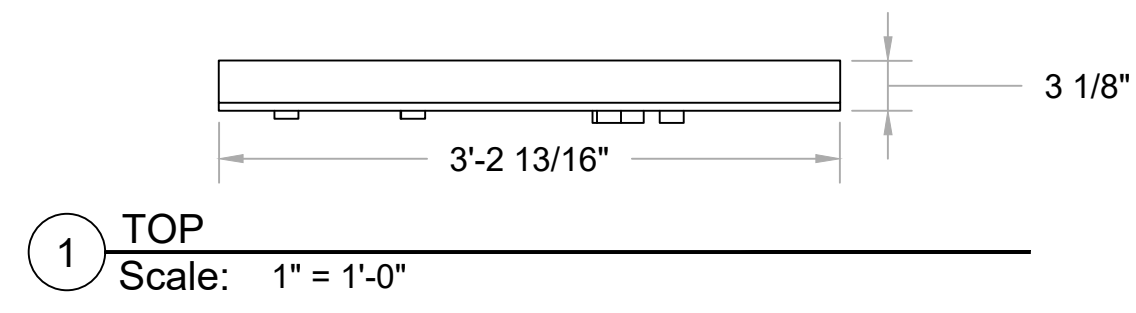
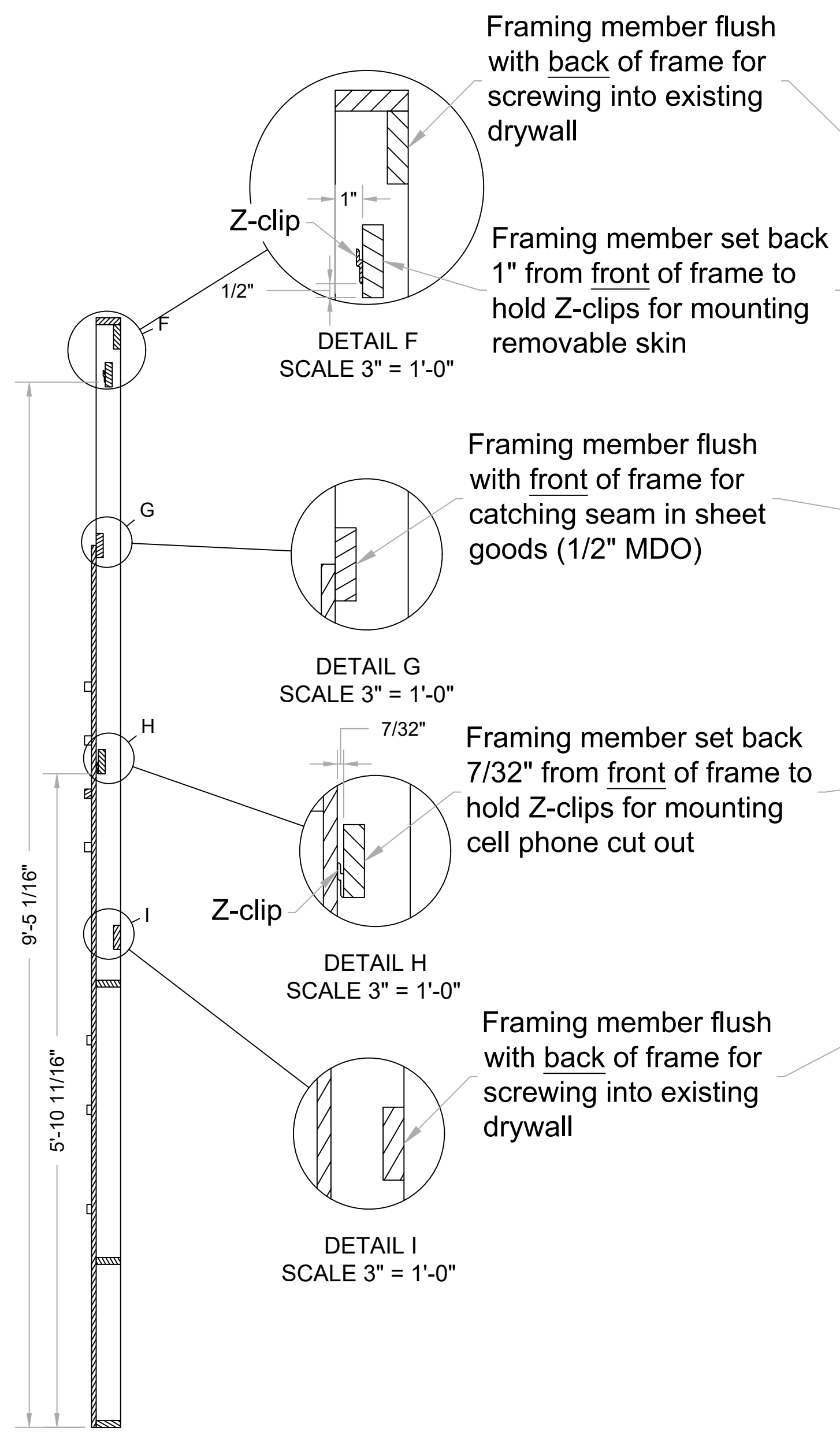


PANEL 2 HARD WALL PART 2

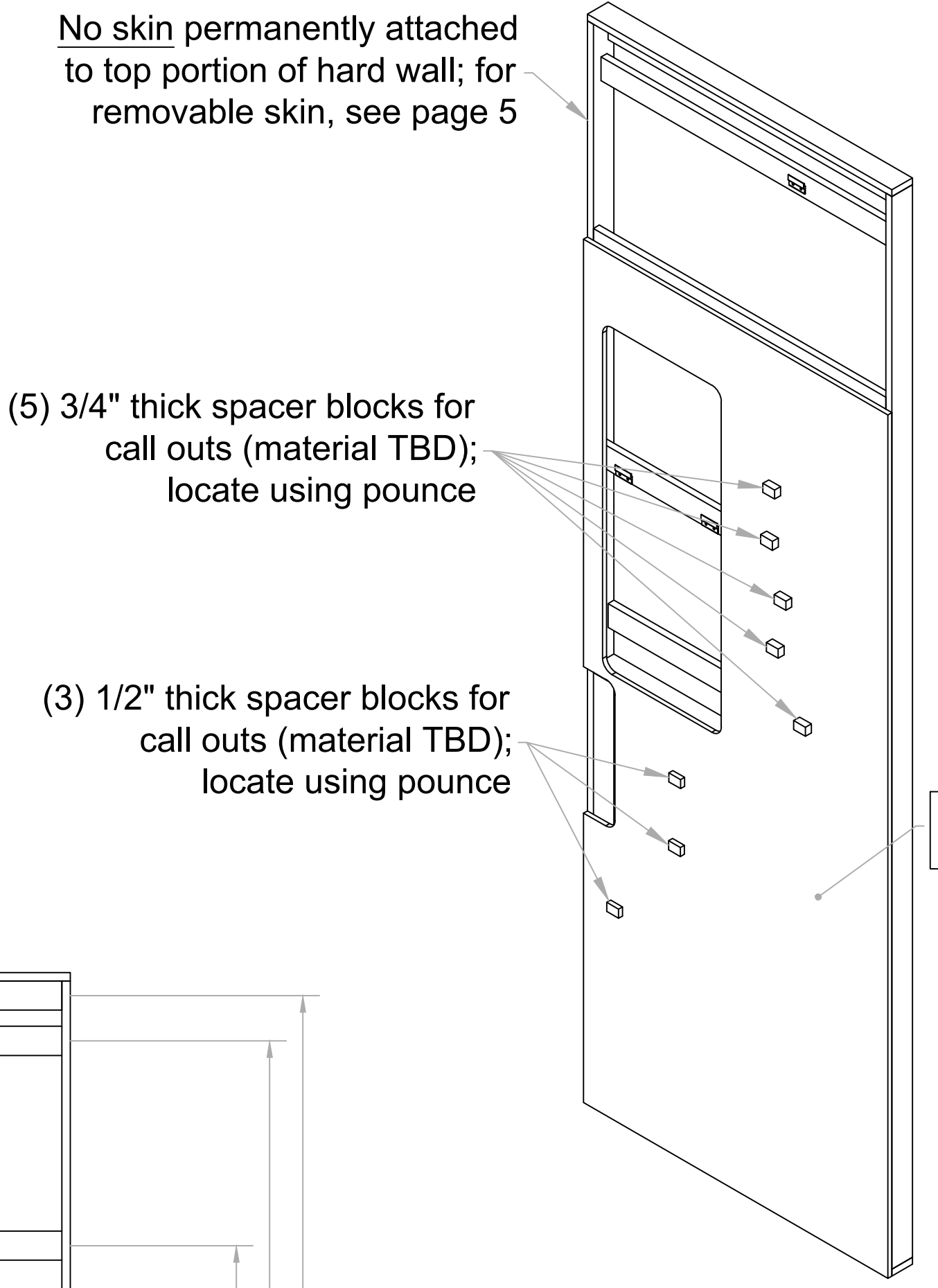
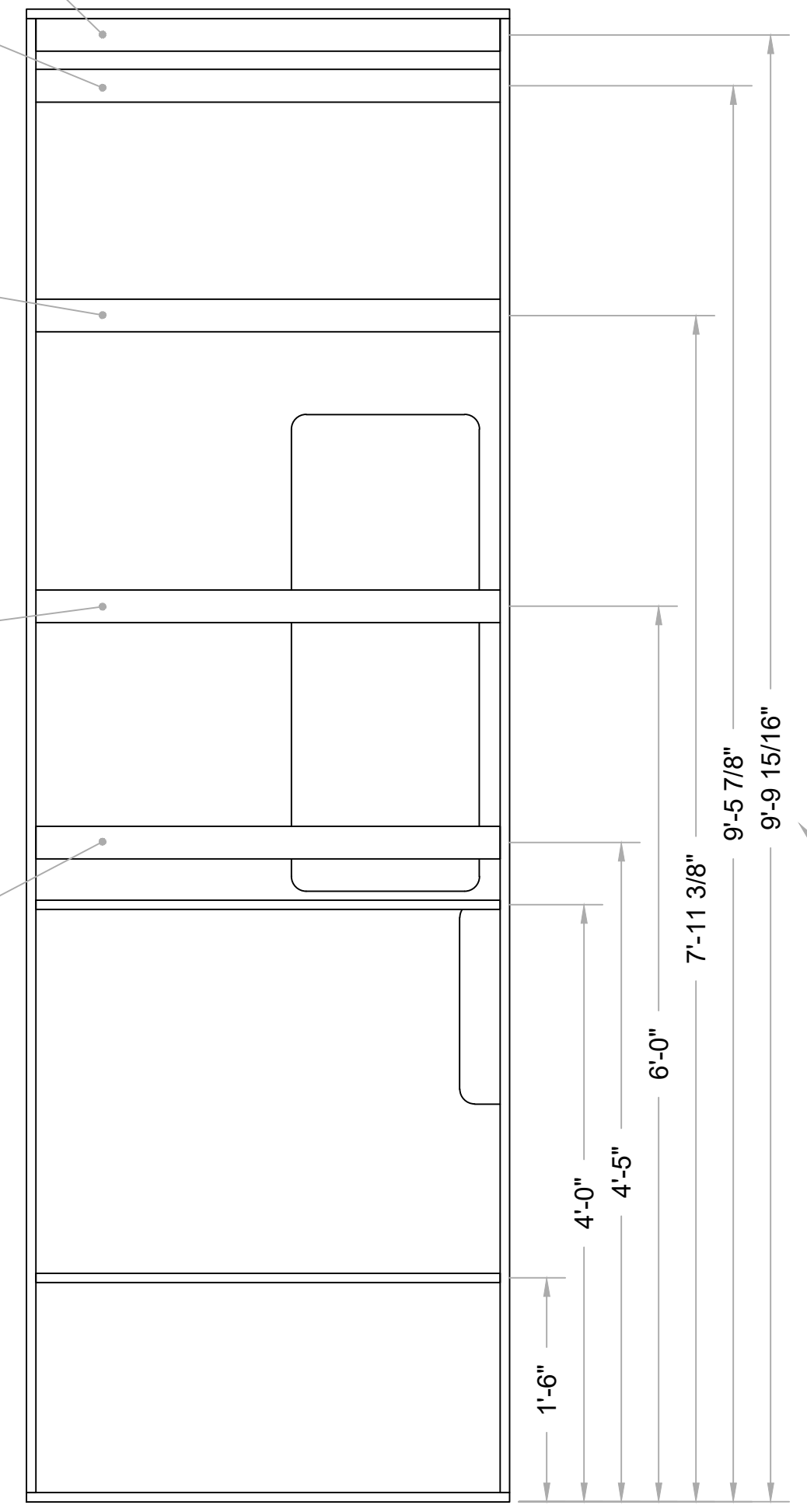
- Note:
- ** Please play close attention to internal framing members **
 - Frame is 3/4" plywood construction
 - Skin is 1/2" MDO with Formica 909-58 Black laminated finish on face
 - Printed vinyl overlay graphics to be applied on-site
 - Hard wall part 2 attaches to hard wall part 1 permanently; unit ships assembled



3 SECTION E-E
SCALE 1" = 1'-0"



4 BACK
Scale: 1" = 1'-0"



ATTENTION!!!
Dimensions taken from bottom of wall to mid-points of framing members