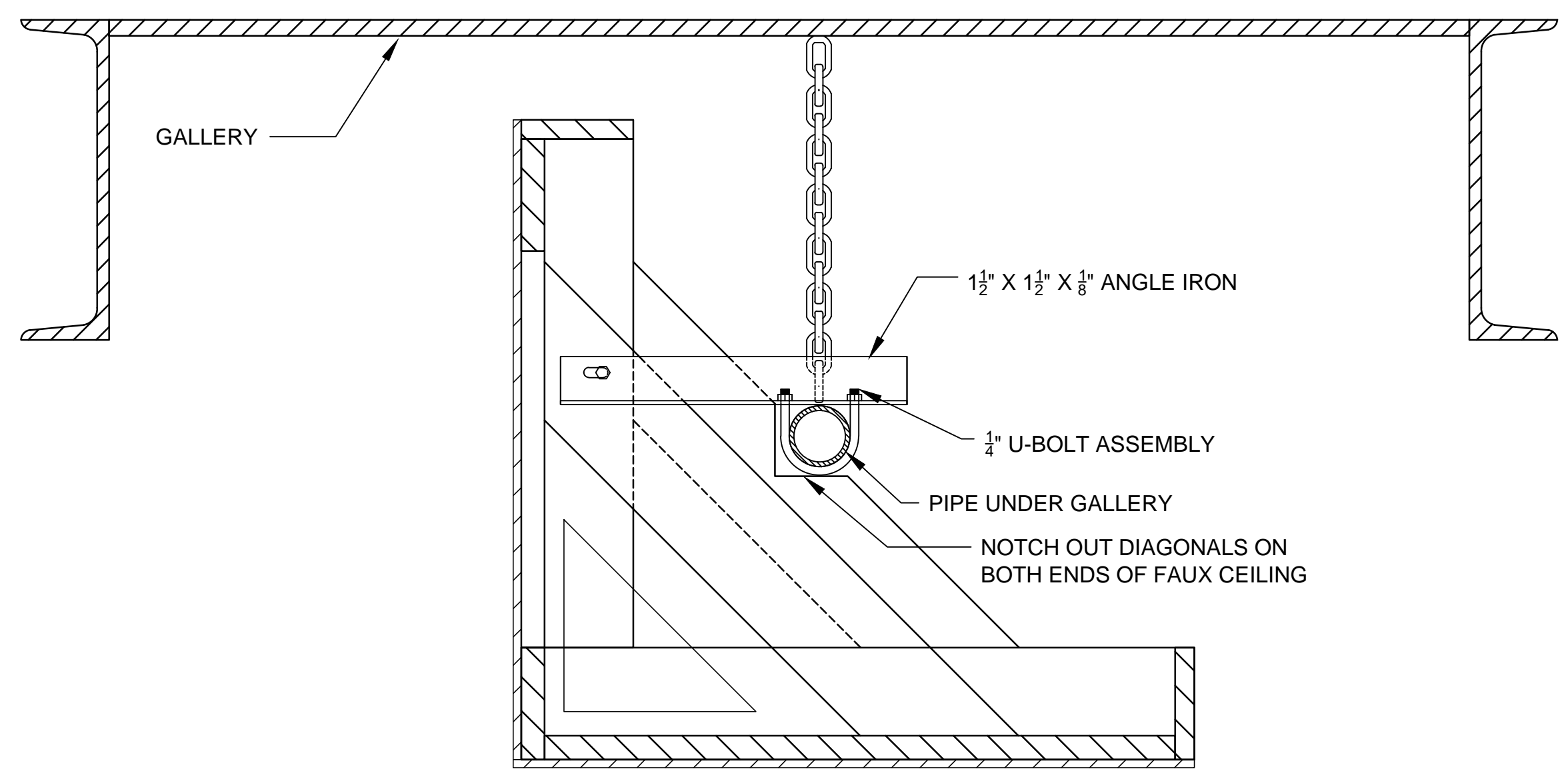
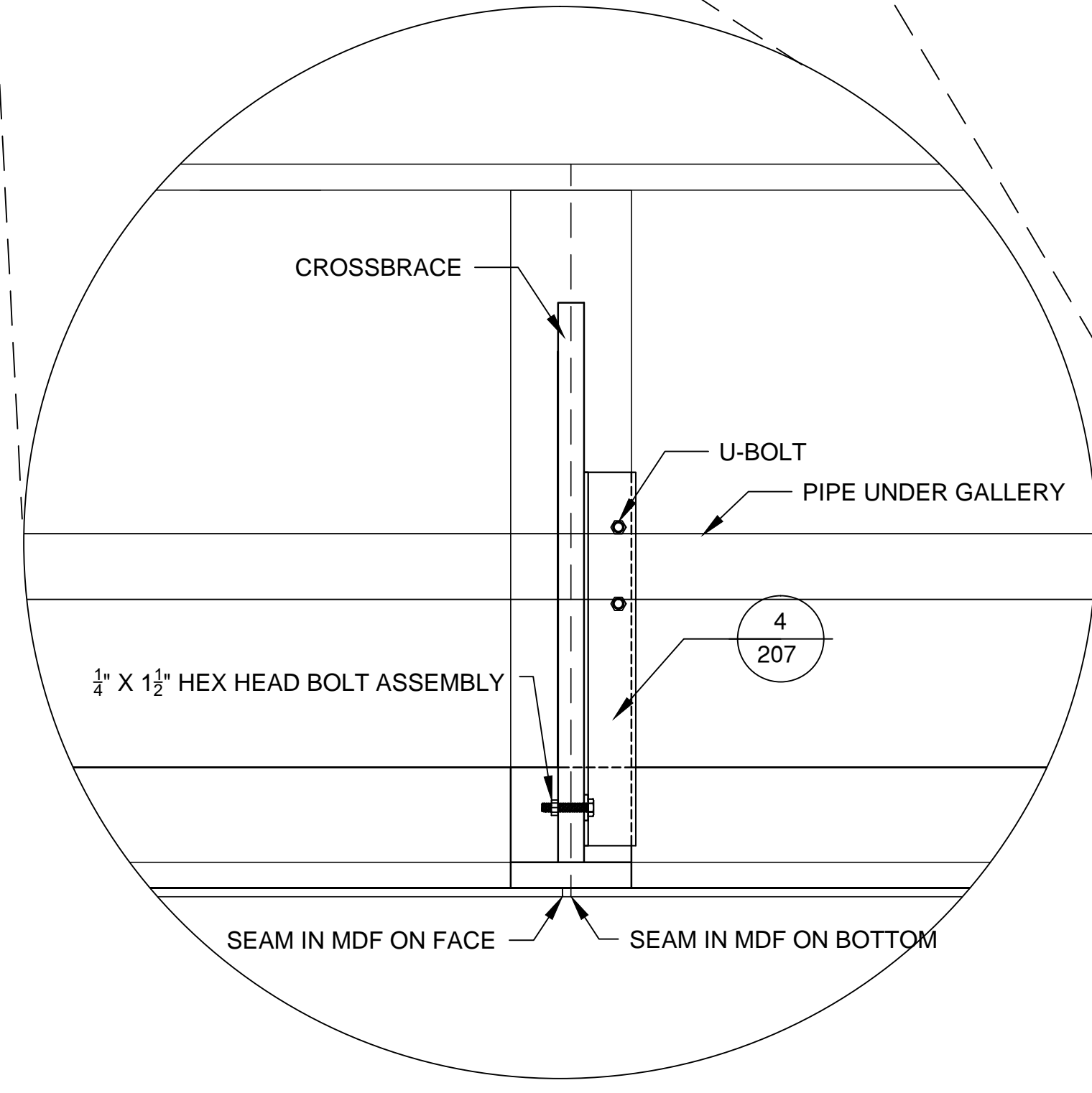


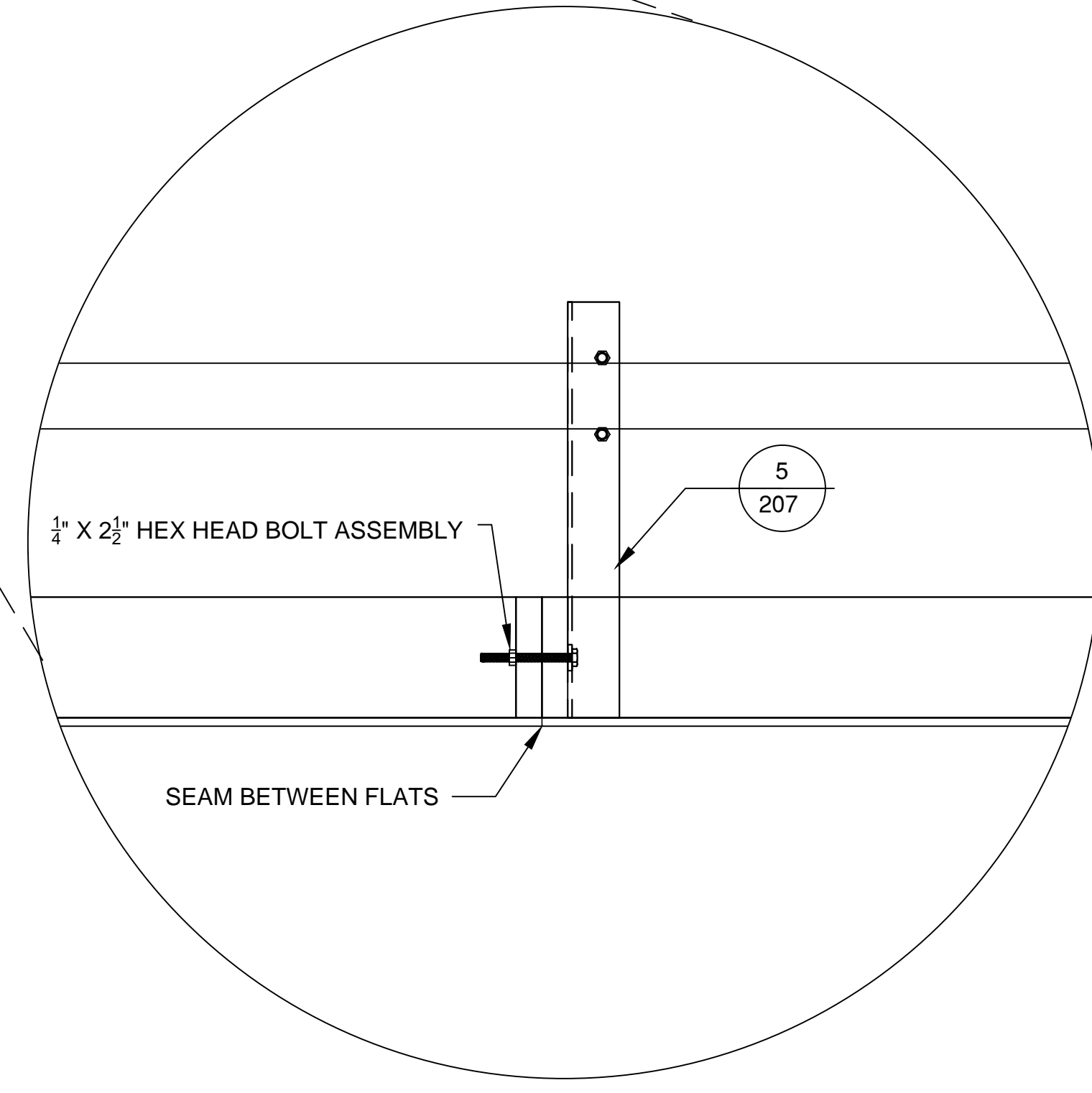
1 US BOTTOM SKYWALL CONNECTION DETAIL - TOP VIEW
207 ON WALLS, BRACKETS ATTACH AT SEAMS
ON FAUX CEILING, BRACKETS ATTACH TO INTERNAL DIAGONAL BRACING
1/2" = 1'-0"



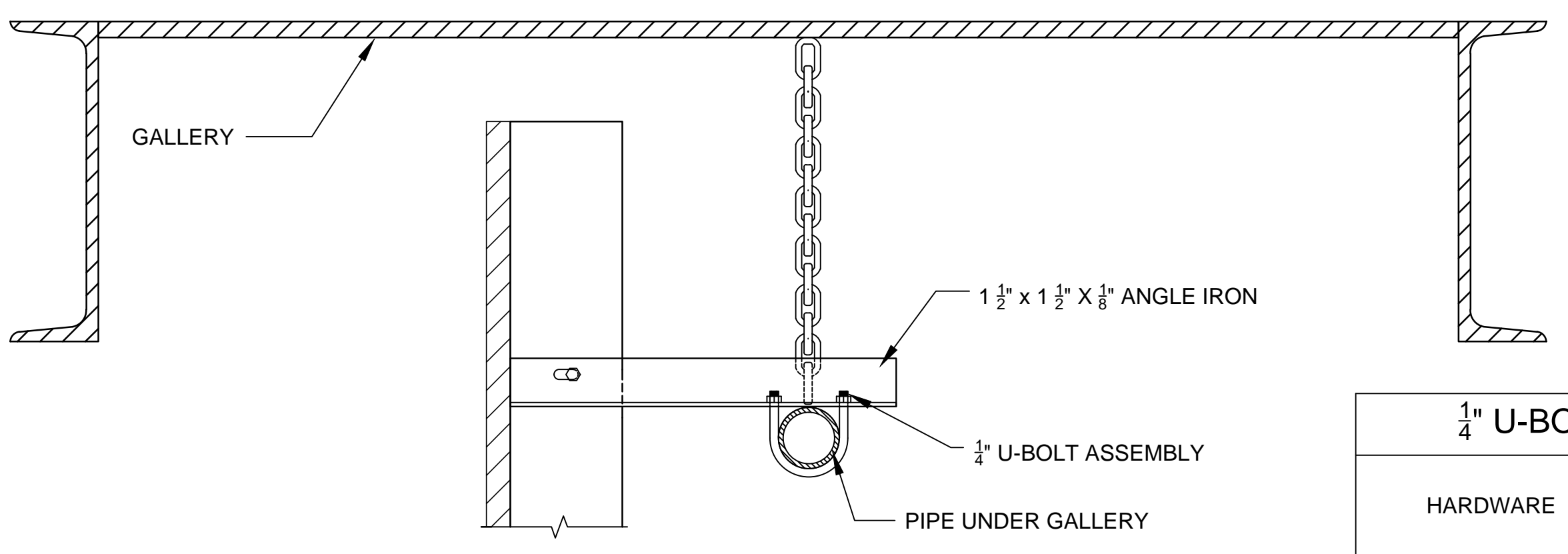
2 FAUX CEILING CONNECTION DETAIL - SIDE SECTION VIEW
207 SEE 4/207 FOR DETAILS ON CONNECTION TO FLAT
USE SIDE ARMS TO PREVENT PIPE ROTATION
3" = 1'-0"



4 ANGLE IRON DETAIL - FAUX CEILING
207 MAKE 3
USE IRON WORKER WITH 5/16" PUNCH TO MAKE HOLES
USE 11/32 X 3/4 SLOT PUNCH FOR BOTTOM HOLE FOR EASY ADJUSTMENT
3" = 1'-0"



5 ANGLE IRON DETAIL - US BTM WALLS
207 MAKE 4
USE IRON WORKER WITH 5/16" PUNCH TO MAKE HOLES
USE 11/32 X 3/4 SLOT PUNCH FOR BOTTOM HOLE FOR EASY ADJUSTMENT
3" = 1'-0"



3 US BOTTOM SKYWALL CONNECTION DETAIL - SIDE SECTION VIEW
207 SEE 5/207 FOR DETAILS ON CONNECTION TO FLAT
USE SIDE ARMS TO PREVENT PIPE ROTATION
3" = 1'-0"

1/4" U-BOLT ASSEMBLY (7 NEEDED)		
HARDWARE	TOTAL QUANTITY	DWG REFERENCE
1/4" WASHERS	14	2 207 3 207
1/4" LOCK WASHERS	14	
1/4" NUTS	14	
1/4" U-BOLTS	7	

1/4" X 1 1/2" HEX HEAD BOLT (3 NEEDED)		
HARDWARE	TOTAL QUANTITY	DWG REFERENCE
1/4" WASHERS	3	4 207
1/4" LOCK WASHERS	3	
1/4" NUTS	3	
1/4" X 1 1/2" HEX HEAD BOLTS	3	

1/4" X 2 1/2" HEX HEAD BOLT (4 NEEDED)		
HARDWARE	TOTAL QUANTITY	DWG REFERENCE
1/4" WASHERS	4	5 207
1/4" LOCK WASHERS	4	
1/4" NUTS	4	
1/4" X 2 1/2" HEX HEAD BOLTS	4	

THE VISIT

CONNECTION DETAIL FOR BOTTOM US SKYWALL

CONNECTIONS GO TO EXISTING PIPE UNDERNEATH GALLERY.

FILENAME: G:\Productions\School Shows\YSD1 The Visit\Scenery\01-Drafting\200-Bottom SkyWall\200 Bottom SkyWall US.dwg

DIRECTOR: COLE LEWIS
DESIGNER: CHIKA SHIMIZU
TD: CHRISTINA KERYCZYNSKYJ
DWG DATE: 10/8/2013 PLOT DATE: 10/8/2013
REV DATE: - REV # -

200

DESIGN REF SHEET #
006-207

DWG BY: ELISE MASUR
SCALE: AS NOTED