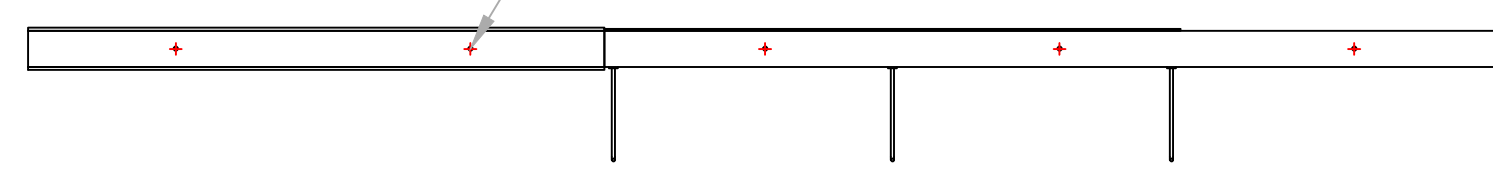


MIDDLE WALL

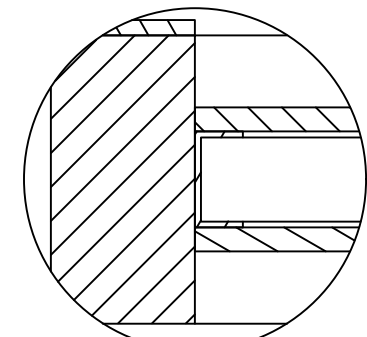
Zinc Yellow-Chromate Plated Hex Head Screw
Grade 8 Steel, 5/16"-18 Thread, 5.5" Long, Partially Threaded



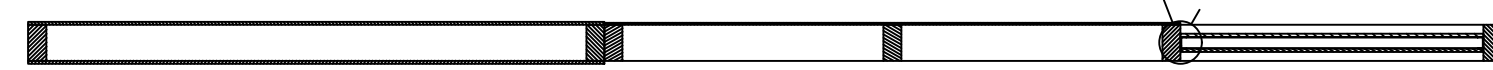
Middle Wall connects to ceiling with 5/16"-18 x 5-1/2" long bolts with lock washers and nuts (5 total)



1 TOP
Scale: 3/4" = 1'-0"



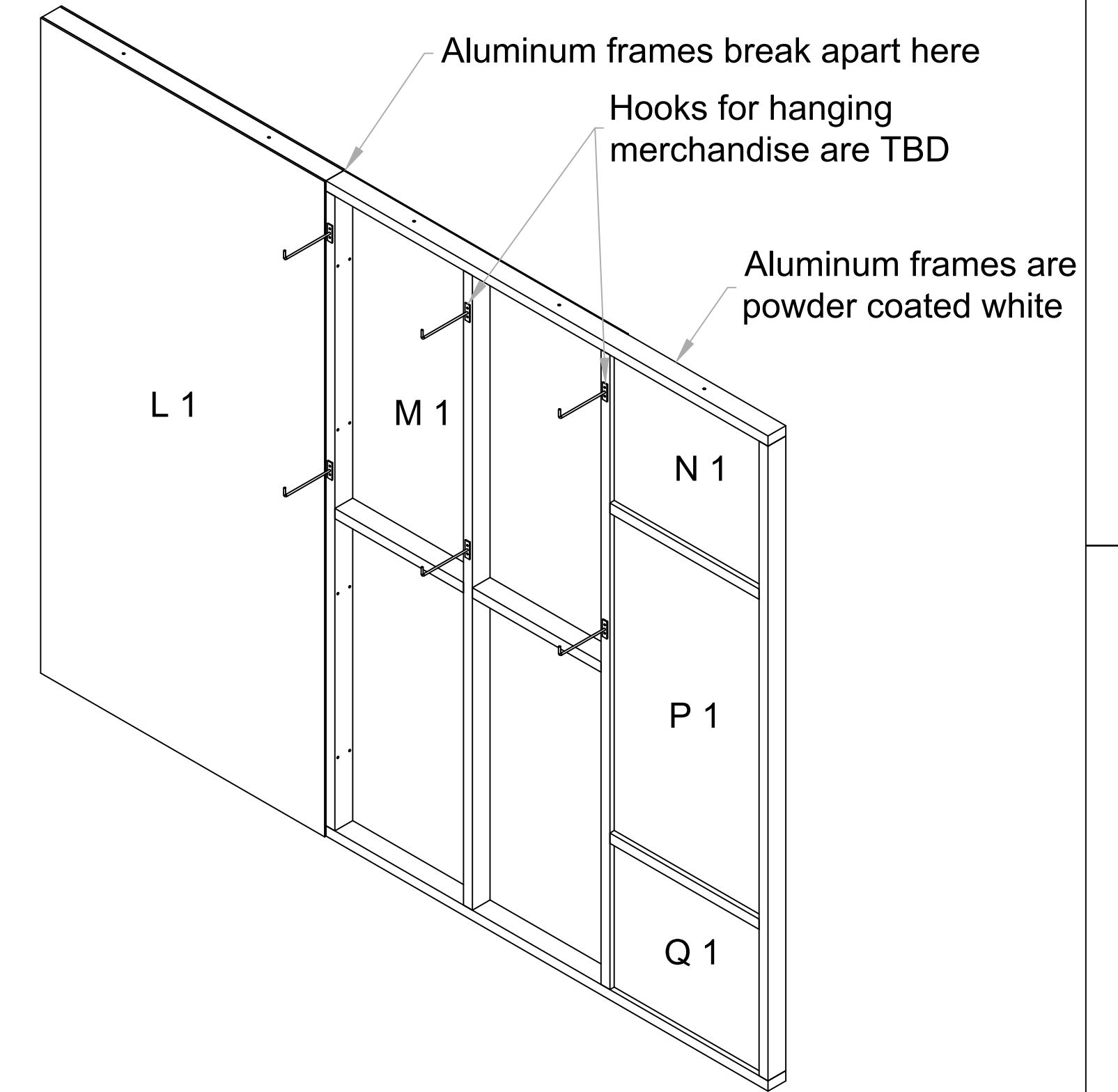
DETAIL N
SCALE 6" = 1'-0"



2 SECTION M-M
SCALE 3/4" = 1'-0"

Notes:

- Frame
 - Framing is 1-1/2"x3"x1/8" aluminum tube; powder coated
 - Frame breaks down into two pieces
 - Pieces attach together and to Back Wall with sex-bolts
- Skin
 - L1 is 1/4" Di-bond with printed graphic; attaches to front of wall
 - L2 is 1/4" Di-bond with printed graphic; attaches to back of wall
 - M1 is natural coroplast; attaches to back of wall with clear VHB tape
 - N1 and N2 are 1/4" Extira™ laminated on both sides with Laminart #9215-E Carbon Black Laminate / Vellum Finish; attach to channel in center of wall (see detail "N" below)
 - P1 and P2 are 1/4" Extira™ with copper laminate on both sides; attach to channel in center of wall (see detail "N" below)
 - Q1 and Q2 are 1/4" Extira™ with galvanized 20GA sheet metal on both sides; attach to channel in center of wall (see detail "N" below)
 - ALL SKIN MUST BE REMOVABLE



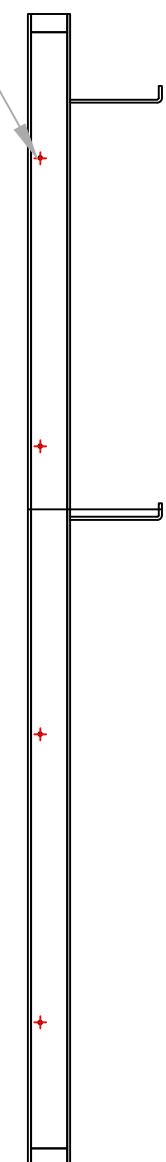
7 FRONT ISO
Scale: NTS

Qty	Part Number	Description	Width	Height
2	L	1/4" Di-bond with printed graphics	48"	96"
1	M	4mm Coroplast - natural	48"	96"
2	N	1/4" Extira™ - laminated both sides with LAMINART #9215-E CARBON BLACK LAMINATE / VELLUM FINISH	25.25"	21.7052"
2	P	1/4" Extira™ with copper laminate	25.25"	46.8567"
2	Q	1/4" Extira™ with galvanized 20GA sheet metal	25.25"	21.4381"

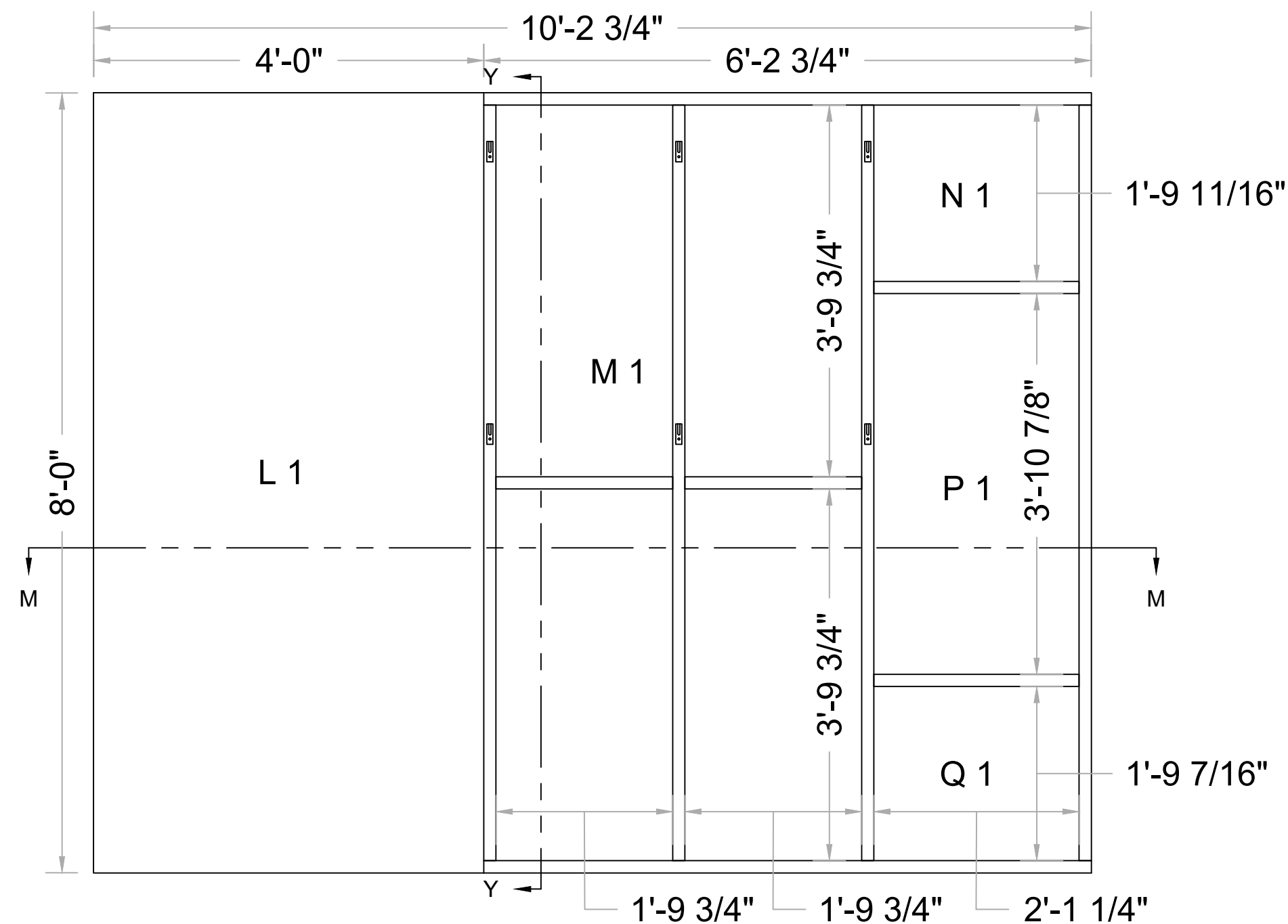
18-8 Stainless Steel Button Head Hex Drive Screw
5/16"-18 Thread, 5" Long



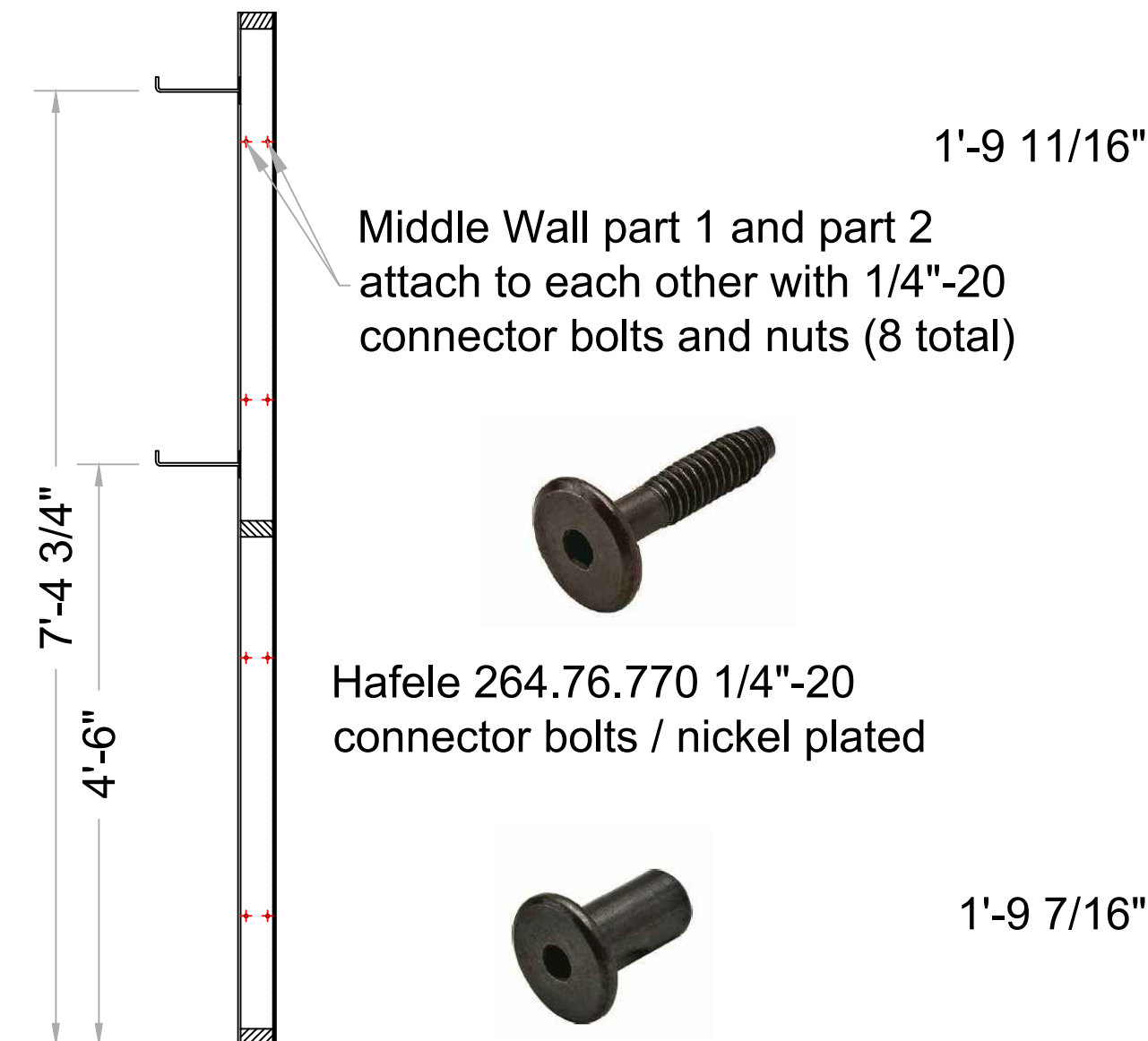
Middle wall attaches to Back Wall with 5/16"-18 x 5" rounded head screws with acorn nuts (4 total)



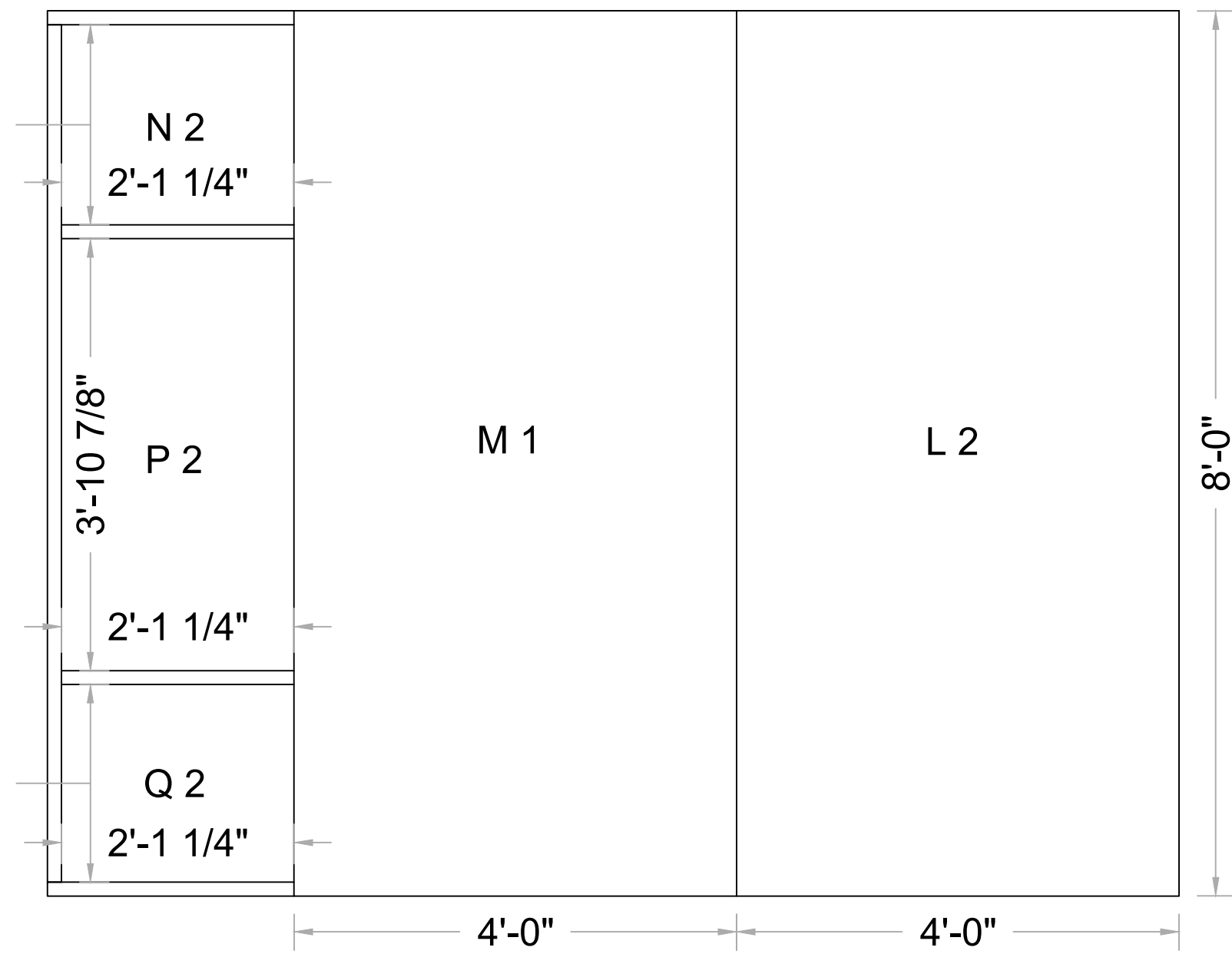
3 LEFT
Scale: 3/4" = 1'-0"



4 FRONT
Scale: 3/4" = 1'-0"



5 SECTION Y-Y
SCALE 3/4" = 1'-0"



6 BACK
Scale: 3/4" = 1'-0"

Addams/Medill Park
Chicago, IL
June 8 - 10, 2018

Brand Activation
Middle Wall

Drawn by: Elise Masur
File ID: D01
Page: 08 OF 19
Revision #: 03
Plotted: 05/22/18