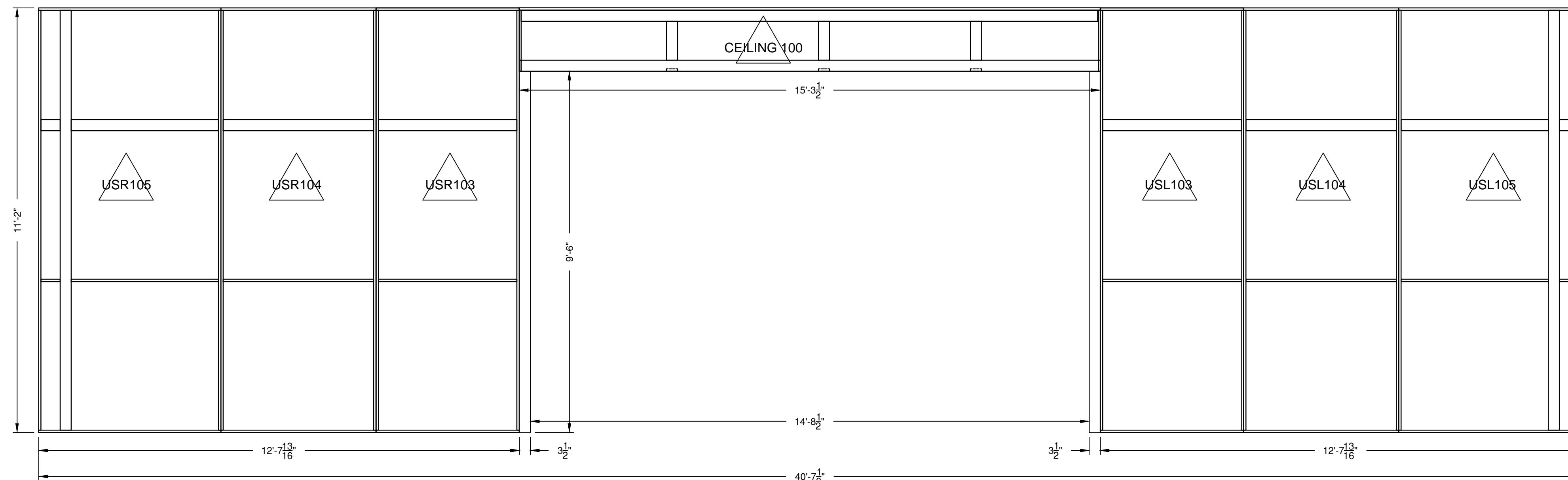
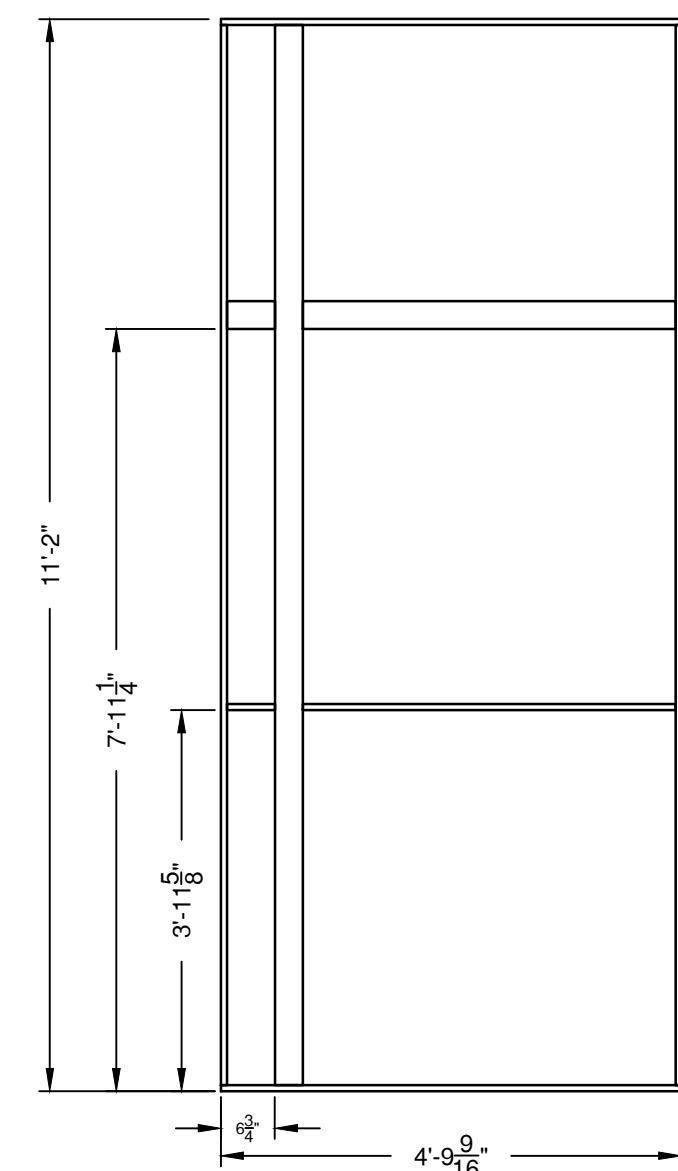


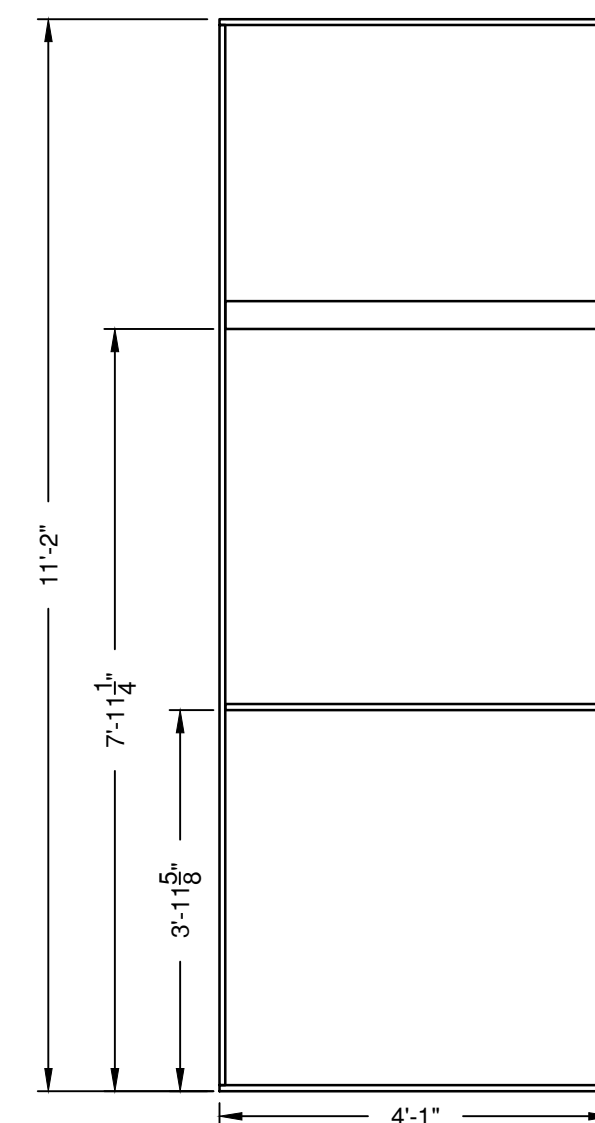
1 BOTTOM SKYWALL US - TOP VIEW 1/2" = 1'-0"
203 MDF ON DOWNSTAGE WALLS EXTENDS PAST FRAME OF REVEAL WALLS



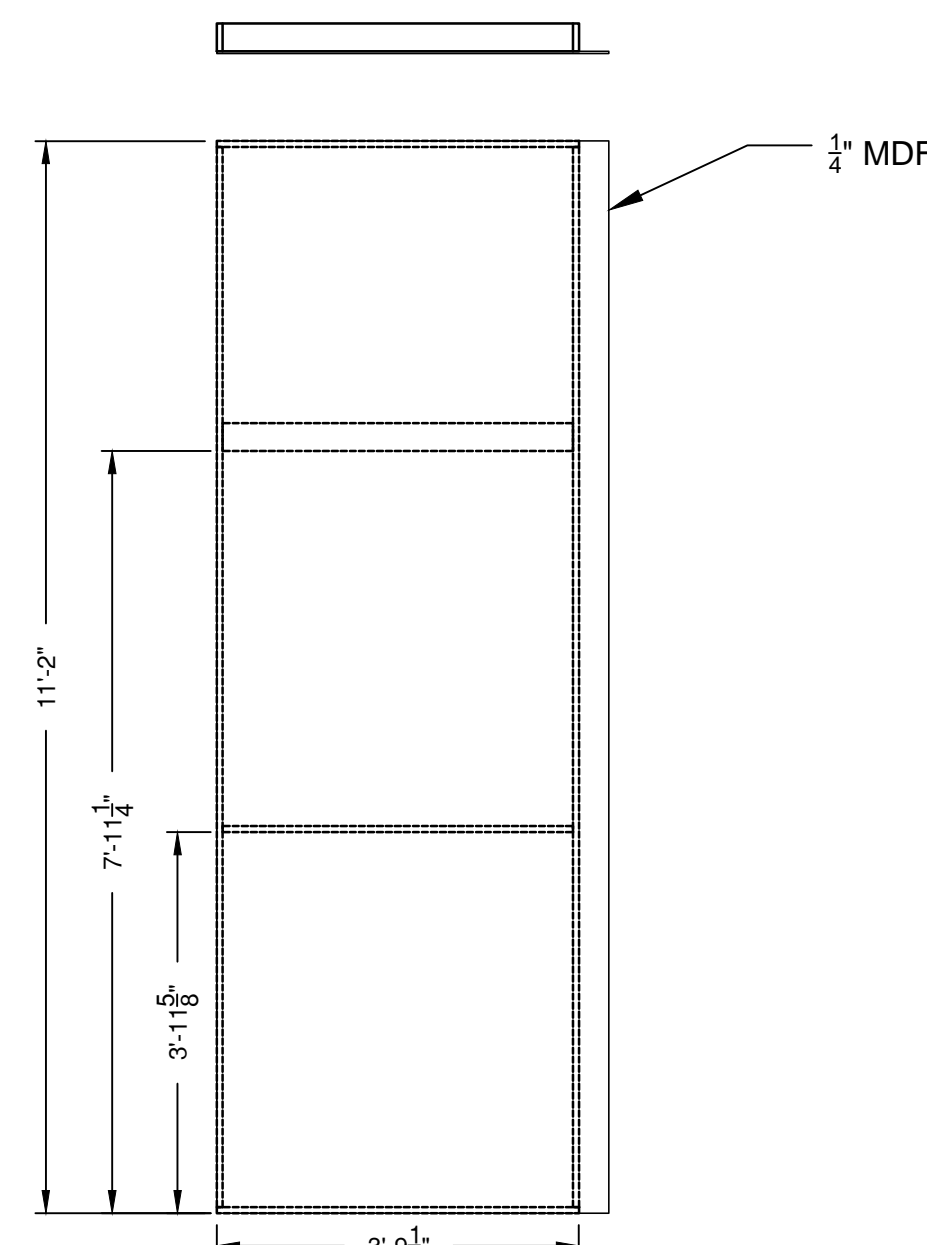
2 BOTTOM SKY WALL US - FRONT ELEVATION 1/2" = 1'-0"
203 10 HOLLYWOOD FLATS AND A FAUX CEILING, ALL FRAMES ARE 1x4 COVER WITH 1/4" MDF
WALLS ATTACH TO EACH OTHER WITH SCREWS
FAUX CEILING SCREWS INTO TOP OF REVEAL WALLS
FLATS ATTACH TO UNDERSIDE OF GALLERY (NOT SHOWN)



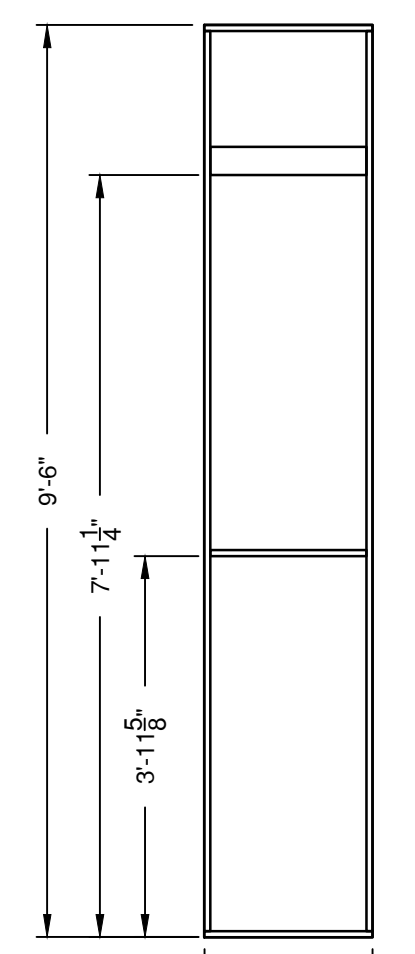
3 USR105 AND USL105 - FRONT VIEW 1/2" = 1'-0"
203 BUILD 1
REVERSE AND REPEAT FOR SL
2 TOTAL
COVER WITH MDF PROFILES 'L', 'M', 'Q', AND 'R'
USE 1X4



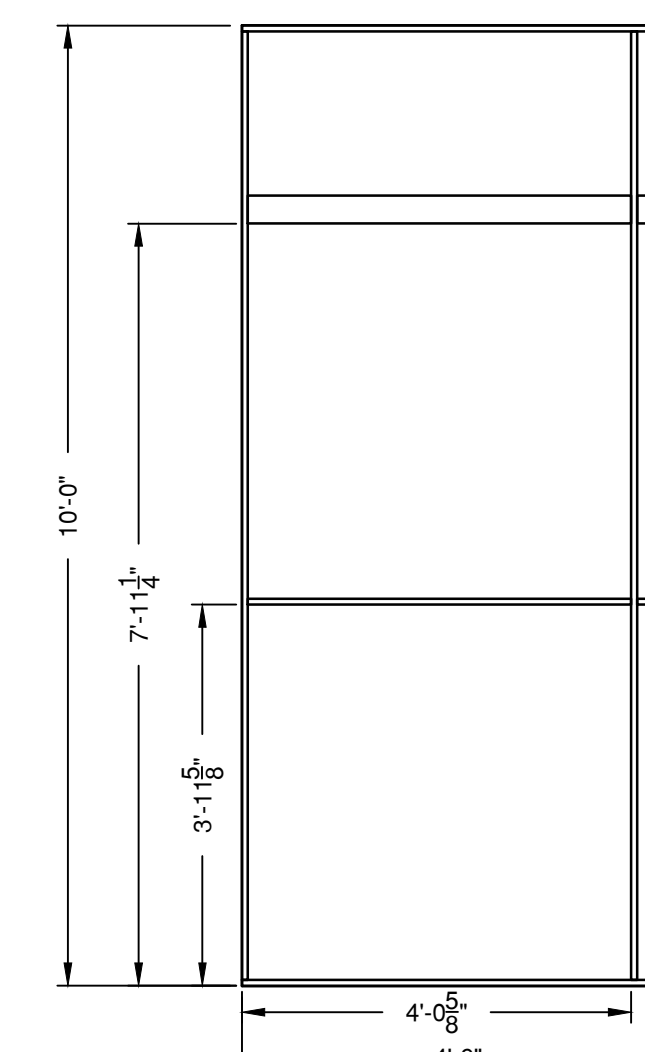
4 USR104 AND USL104 - FRONT VIEW 1/2" = 1'-0"
203 BUILD 1
REPEAT FOR SL
2 TOTAL
COVER WITH MDF PROFILES 'M' AND 'R'



5 USR103 AND USL103 - FRONT AND TOP VIEW 1/2" = 1'-0"
203 BUILD 1
REPEAT FOR SL
2 TOTAL
COVER WITH MDF PROFILES 'N' AND 'R'



6 USR102 AND USL102 - FRONT VIEW 1/2" = 1'-0"
203 BUILD 1
REPEAT FOR SL
2 TOTAL
COVER WITH MDF PROFILES 'S' AND 'V'



7 WAIT UNTIL FURTHER NOTICE BEFORE BUILDING 1/2" = 1'-0"
203 BUILD 1
REPEAT FOR SL
2 TOTAL
COVER WITH MDF PROFILES 'M', 'T', 'U', AND 'W'

THE VISIT

FRAMES FOR BOTTOM SKYWALL - UPSTAGE

10 WALLS (INCLUDING REVEAL) AND A FAUX CEILING. BUILT FROM 1X4 AND COVERED WITH .25" MDF.

FILENAME: G:\Productions\School Shows\YSD1 The Visit\Scenery\01-Drafting\200-Bottom SkyWall\200 Bottom SkyWall US.dwg

DIRECTOR:	COLE LEWIS
DESIGNER:	CHIKA SHIMIZU
TD:	CHRISTINA KERYCZYNSKYJ
DWG DATE:	09/15/2013
REV DATE:	
REV #:	

200

DESIGN REF SHEET #

006-203

DWG BY: ELISE MASUR

SCALE: AS NOTED