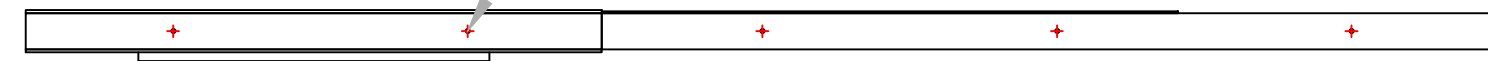


LEFT WALL

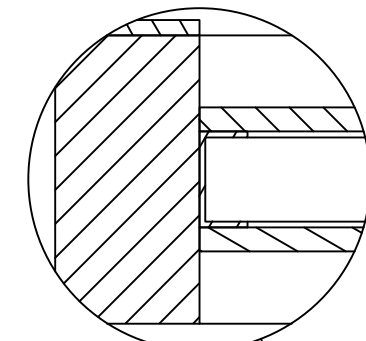
**Zinc Yellow-Chromate Plated Hex Head Screw**  
Grade 8 Steel, 5/16"-18 Thread, 5.5" Long, Partially Threaded



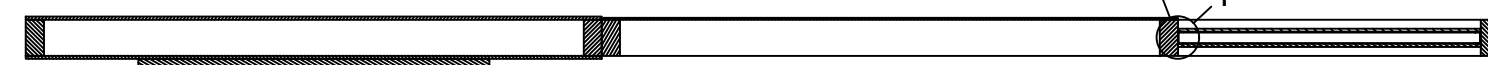
Left Wall connects to ceiling with 5/16"-18 x 5-1/2" long bolts with lock washers and nuts (5 total)



1 TOP  
Scale: 3/4" = 1'-0"



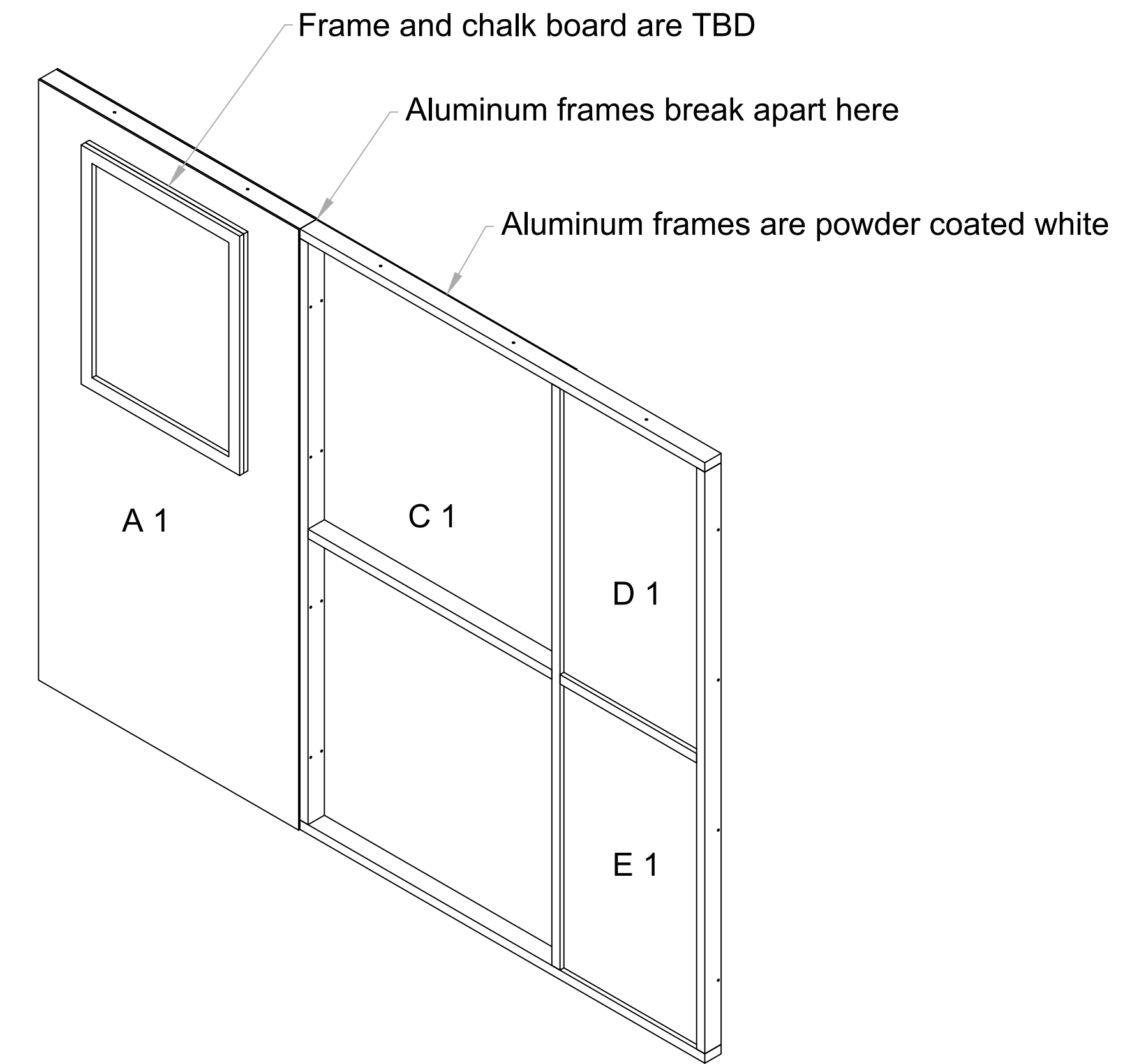
DETAIL  
SCALE 6" = 1'-0"



2 SECTION H-H  
SCALE 3/4" = 1'-0"

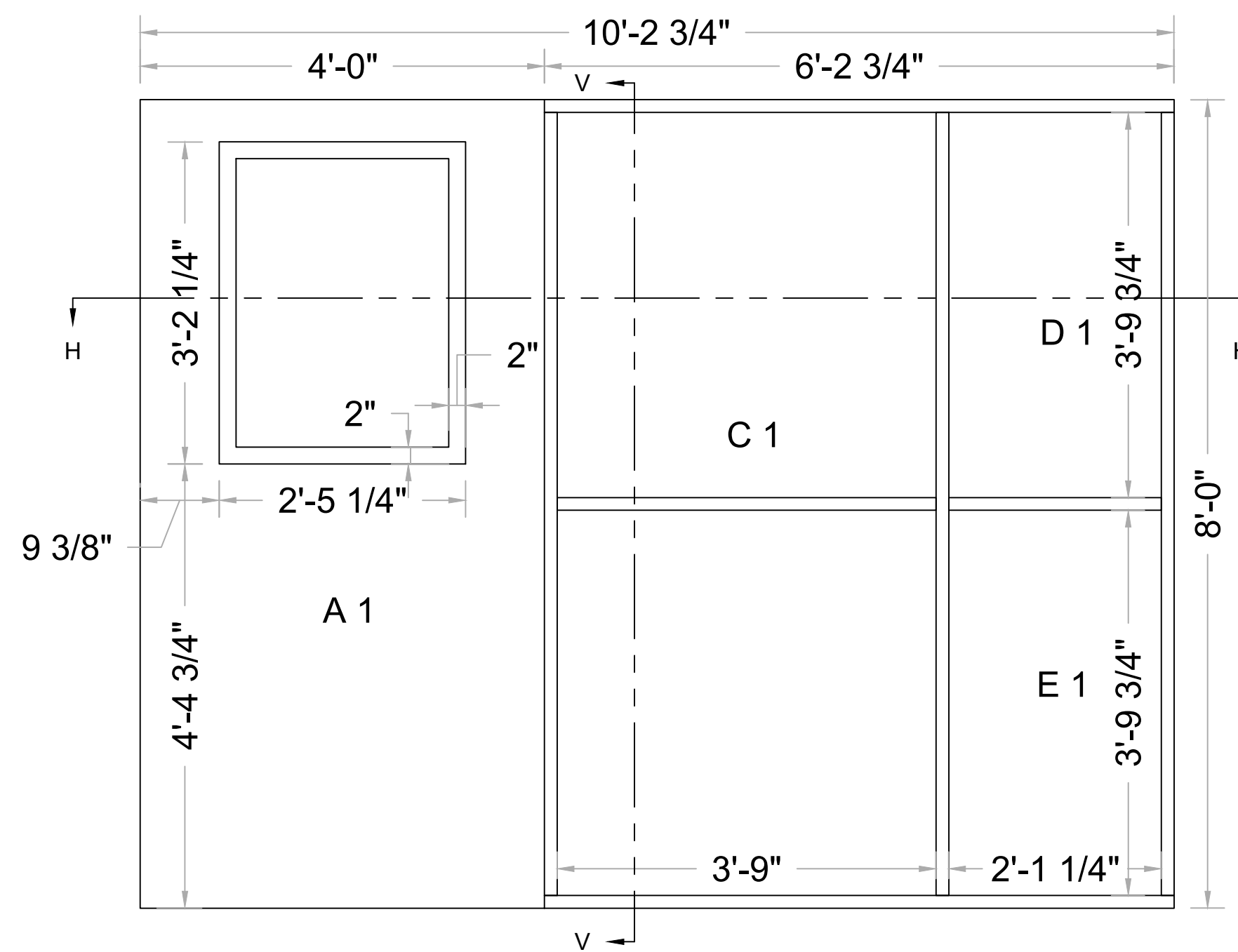
Notes:

- Frame
  - Framing is 1-1/2"x3"x1/8" aluminum tube; powder coated
  - Frame breaks down into two pieces
  - Pieces attach together and to Back Wall with sex-bolts
- Skin
  - A1 is 1/4" Extrira™ with galvanized 20GA sheet metal on both sides; attaches to front of wall
  - B1 is 1/4" Di-bond with printed graphic; attaches to back of wall
  - C1 is natural coroplast; attaches to back of wall with clear VHB tape
  - D1 and D2 are 1/4" Extrira™ with copper laminate on both sides; attach to channel in center of wall (see detail "I" below)
  - E1 and E2 are 1/4" Extrira™ laminated on both sides with Laminart #9215-E Carbon Black Laminate / Vellum Finish; attach to channel in center of wall (see detail "I" below)
  - ALL SKIN MUST BE REMOVABLE



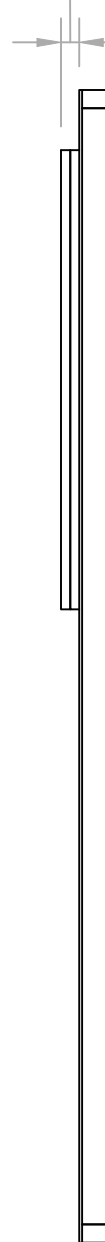
7 FRONT ISO  
Scale: NTS

Qty	GRAPHIC SCHED.	Part Number	Description	Width	Height
1	A	A	1/4" Extrira™ with galvanized 20GA sheet metal	48"	96"
1	B	B	1/4" Di-bond with printed graphics	48"	96"
1	C	C	4mm Coroplast - natural	48"	96"
2	D	D	1/4" Extrira™ with copper laminate	25.25"	45.75"
2	E	E	1/4" Extrira™ - laminated both sides with LAMINART #9215-E CARBON BLACK LAMINATE / VELLUM FINISH	25.25"	45.75"



3 FRONT  
Scale: 3/4" = 1'-0"

1 1/2"



Left wall attaches to Back Wall with 5/16"-18 x 5" rounded head screws with acorn nuts (4 total)

**18-8 Stainless Steel Button Head Hex Drive Screw**  
5/16"-18 Thread, 5" Long



Left Wall part 1 and part 2 attach to each other with 1/4"-20 connector bolts and nuts (8 total)

Hafele 264.76.770 1/4"-20 connector bolts / nickel plated

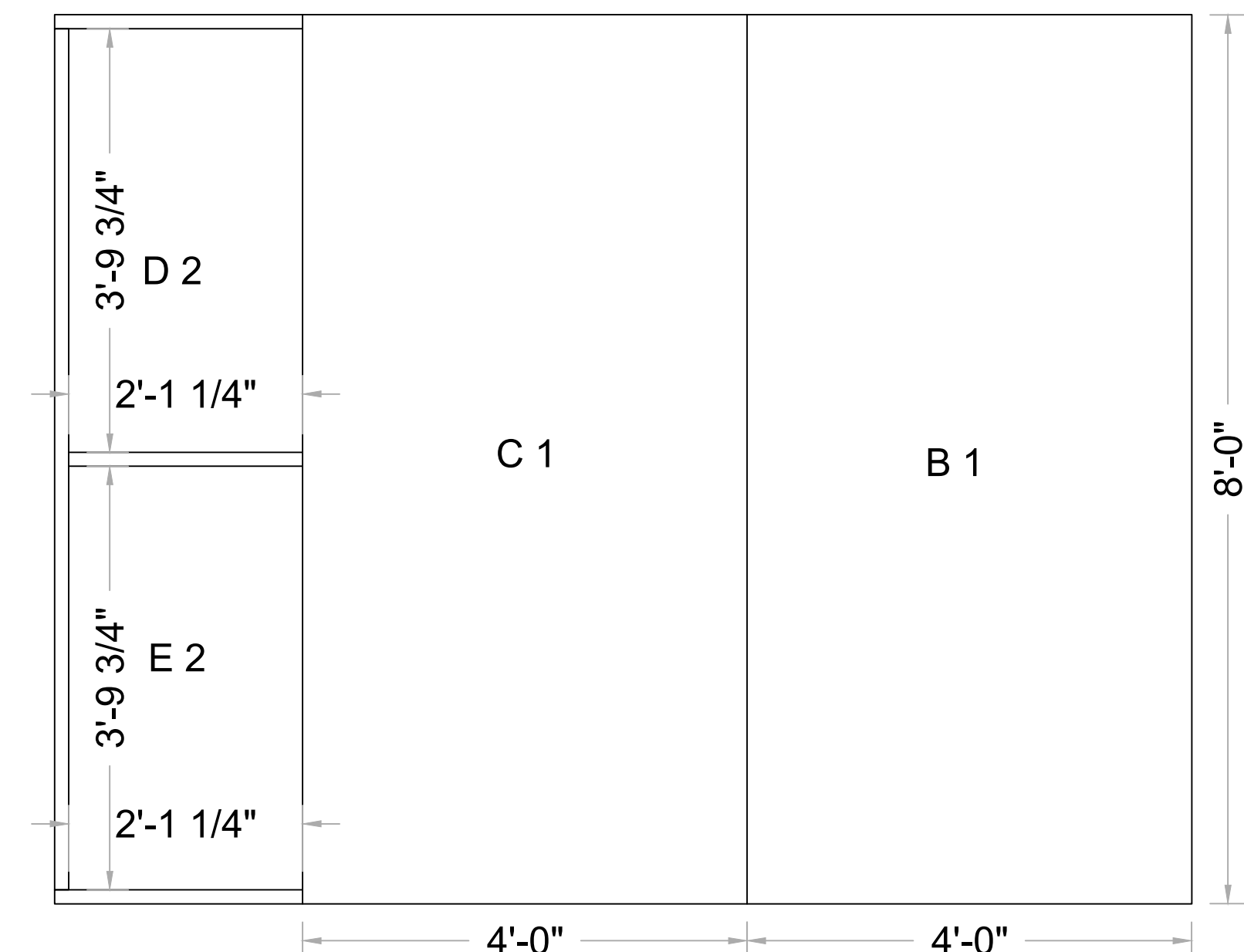


Hafele 267.10.616 1/4"-20 connector nuts / nickel plated



4 RIGHT  
Scale: 3/4" = 1'-0"

5 SECTION V-V  
SCALE 3/4" = 1'-0"



6 BACK  
Scale: 3/4" = 1'-0"