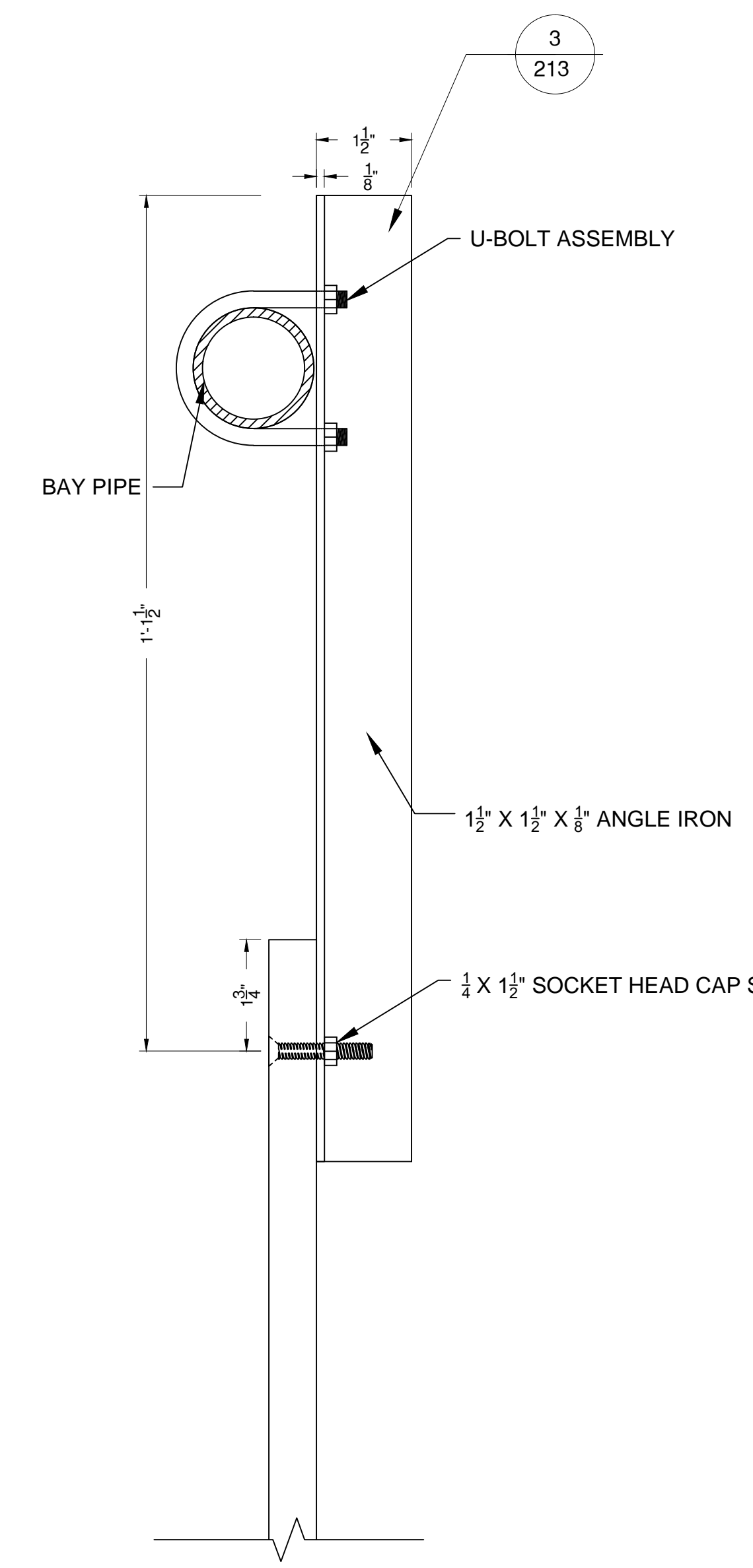
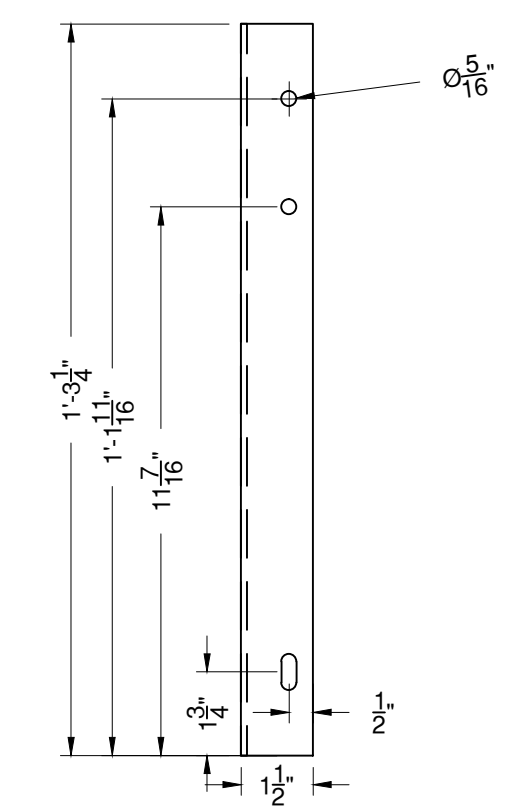


1 CONNECTION DETAILS - REAR VIEW
 213 28 REGULAR SCABS, 3 HOGS' TROUGH SCABS 1/2" = 1'-0"
 4 BAY PIPES AND 10 BEAM CLAMPS
 ATTACH SCABS WITH SCREWS FROM FRONT OF FLAT
 ADJUST SCAB PLACEMENT TO ACCOUNT FOR CORNERBLOCKS AND STRAPS ON FRAMES



2 ANGLE IRON TO FLAT CONNECTION - SIDE VIEW
 213 USE 1 1/2" X 1/4" SOCKET HEAD CAP SCREWS 6" = 1'-0"
 ATTACH FLATS TO ANGLE IRON DURING LOAD-IN
 CUT SMALL SLIT IN MUSLIN, DRILL AND COUNTERSINK HOLE, THEN INSERT SCREW
 APPLY GLUE AND REAPPLY MUSLIN AFTER INSERTING SCREW



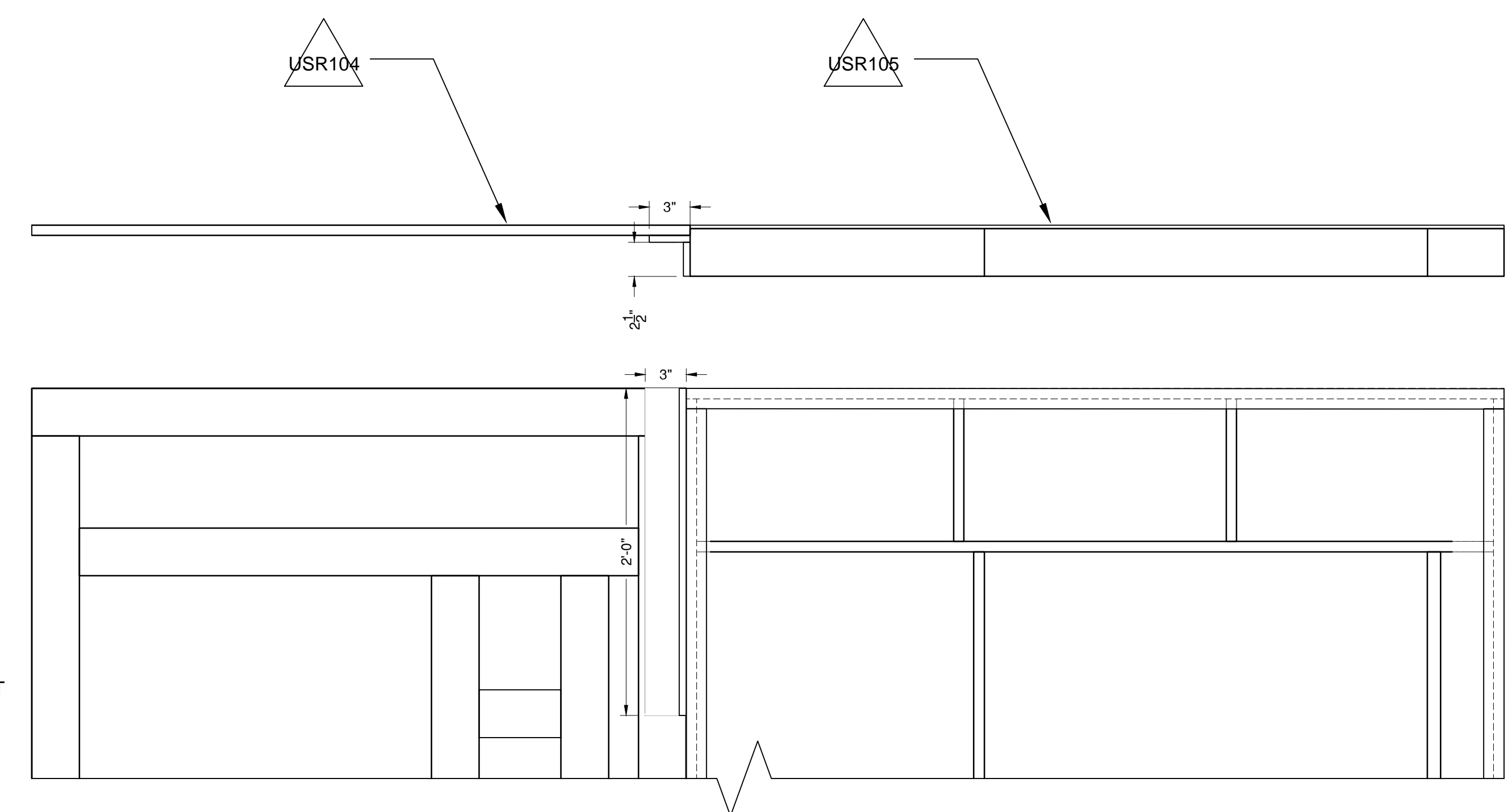
3 1 1/2" X 1 1/2" X 1/8" ANGLE IRON - DIMENSIONS
 213 HOLES ARE NOT CENTERED 3" = 1'-0"
 USE IRON WORKER WITH 5/16" PUNCH TO MAKE HOLES
 USE 11/32 X 3/4 SLOT PUNCH FOR BOTTOM HOLE FOR EASY ADJUSTMENT
 MAKE 8

1/4" U-BOLT ASSEMBLY (8 NEEDED)

| HARDWARE | TOTAL QUANTITY | DWG REFERENCE |
|-------------------|----------------|---------------|
| 1/4" WASHERS | 16 | 2 213 |
| 1/4" LOCK WASHERS | 16 | |
| 1/4" NUTS | 16 | |
| 1/4" U-BOLTS | 8 | |

1/4" X 1 1/2" SOCKET HEAD CAP SCREW ASSEMBLY (8 NEEDED)

| HARDWARE | TOTAL QUANTITY | DWG REFERENCE |
|-----------------------------|----------------|---------------|
| 1/4" WASHERS | 8 | 3 213 |
| 1/4" LOCK WASHERS | 8 | |
| 1/4" NUTS | 8 | |
| 1/4" SOCKET HEAD CAP SCREWS | 8 | |



4 CONNECTION BETWEEN USR104 AND USR105 - TOP AND REAR VIEWS
 213 SCREW THRU FRONT OF USR104 INTO HOGS' TROUGH 1 1/2" = 1'-0"
 SCREW THRU FRAME OF USR105 INTO HOGS' TROUGH

THE VISIT

CONNECTION DETAILS FOR TOP SKYWALLS - UPSTAGE

U-BOLT 1 1/2" ANGLE IRON TO BAY PIPE. ATTACH FRAMES TO ANGLE IRON WITH 1/4" FLAT HEAD BOLTS.

FILENAME: G:\Productions\School Shows\YSD1 The Visit\Scenery\01-Drafting\210-Top SkyWall\210-Top SkyWall US.dwg

DIRECTOR: COLE LEWIS
 DESIGNER: CHIKA SHIMIZU
 TD: CHRISTINA KERYCZYNSKYJ
 DWG DATE: 9/30/2013 PLOT DATE: 10/02/2013
 REV DATE: - REV #:

INV CODE: 210

DESIGN REF SHEET #
005-213

DWG BY: ELISE MASUR
 SCALE: AS SHOWN