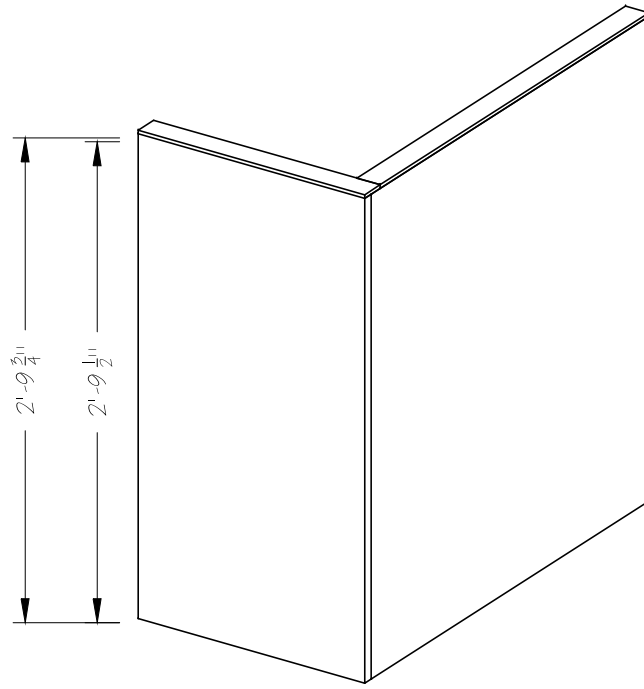
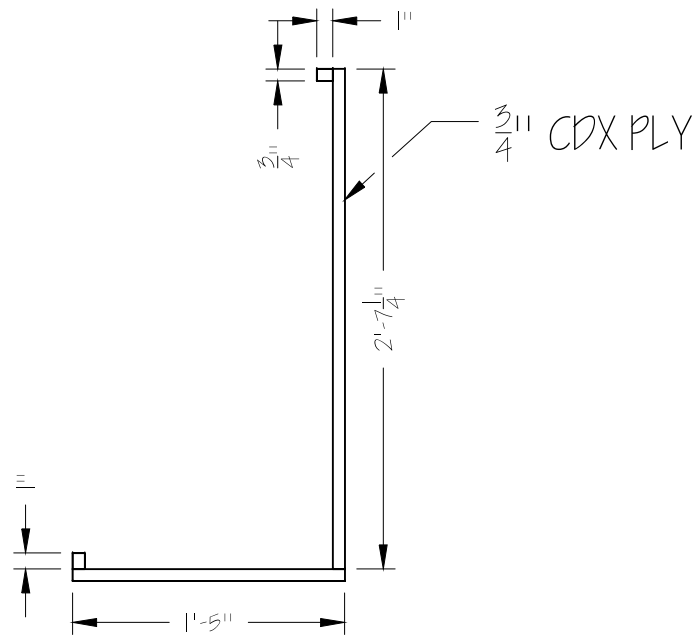


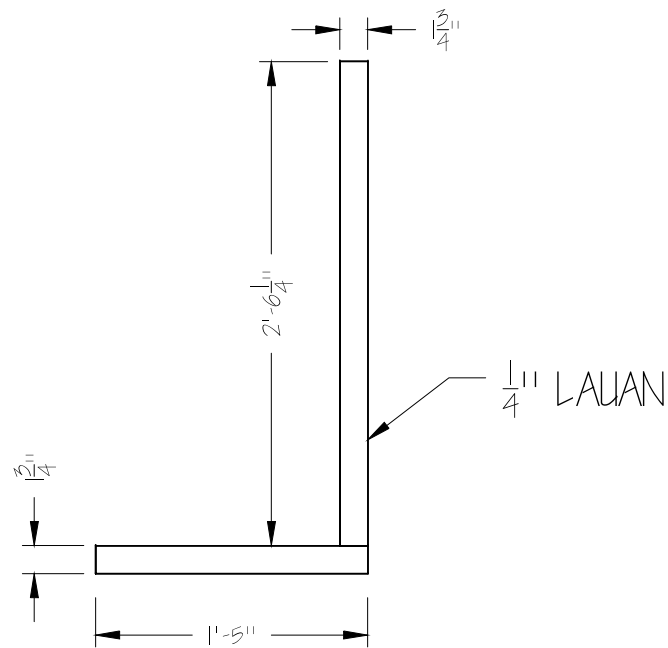
1
301
COLUMN - TOP VIEW
BUILD TWO (2). ONE (1) IS R&R.
1 = 1'-0"



2
301
COLUMN BASE - ISOMETRIC VIEW
BUILD TWO (2). ONE (1) IS R&R.
1 = 1'-0"



3
301
COLUMN BASE FRAME - TOP VIEW
LID NOT INCLUDED FOR CLARITY. SEE DRAWING 4/ 301.
BUILD TWO (2). ONE (1) IS R&R.
EACH PIECE 5 2'-9 1/2" TALL.
ASSEMBLE WITH WOOD GLUE AND FINISH NAILS
1 = 1'-0"



4
301
COLUMN BASE LID - TOP VIEW
CUT TWO (2).
ATTACH TO PLYWOOD FRAME WITH GLUE AND NARROW CROWN STAPLES.
1 = 1'-0"

NOTES:
BUILD TWO (2).
ONE (1) IS REVERSE AND REPEAT.
USE SCRAP MATERIAL WHERE
POSSIBLE.

Director: JEREMY WILLIAMS
Scenic Designer: JEFF KMIEC
Technical Director: PHIL BRULOTTE
Assistant Technical Director: ELISE MASUR
Scale: AS SHOWN

HAMLET
COLUMN BASES

Plate Number:

301