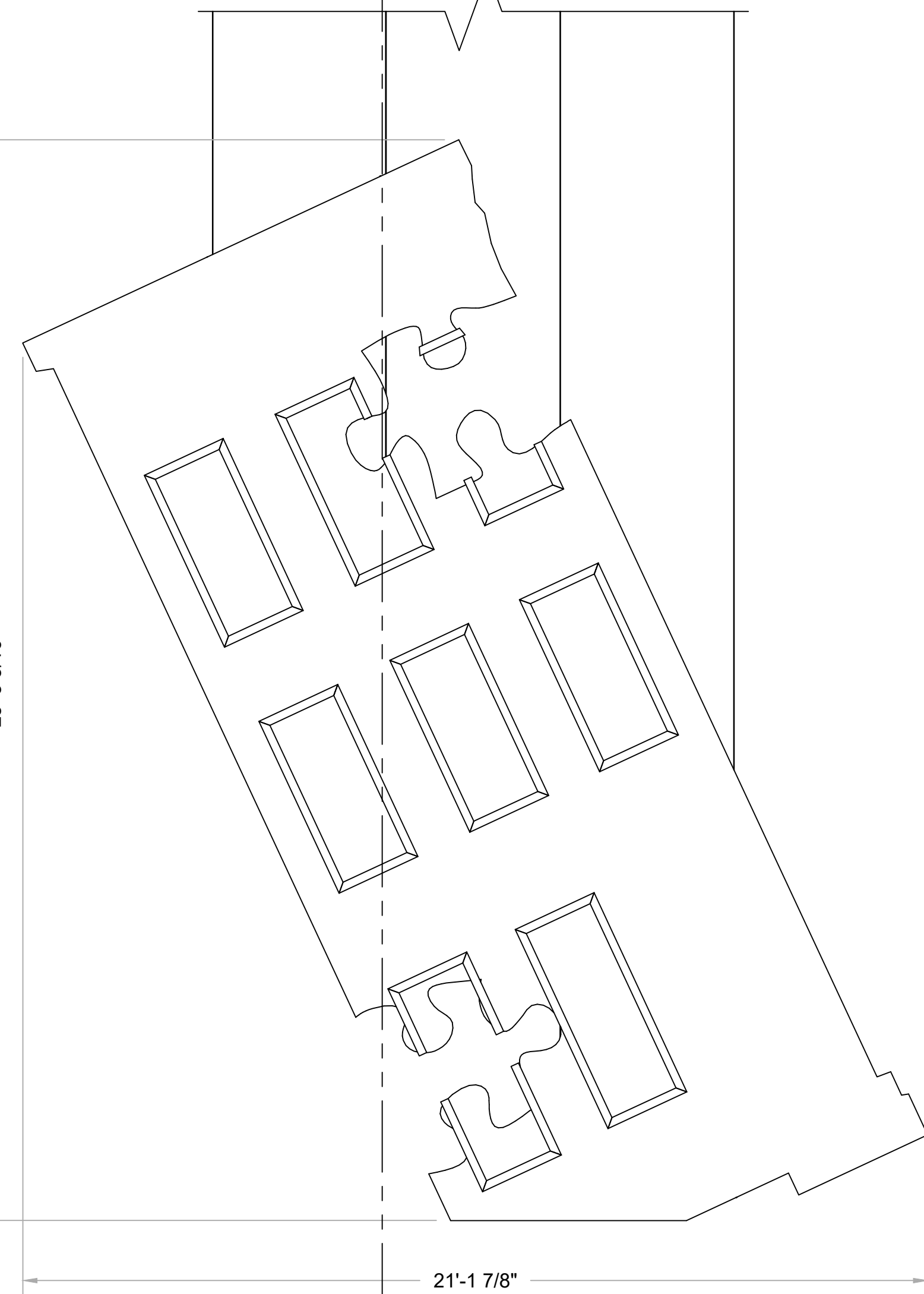
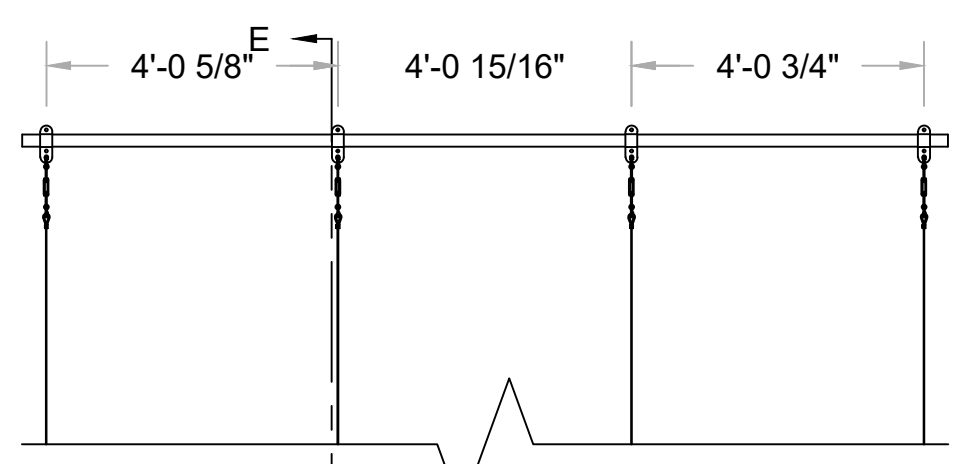
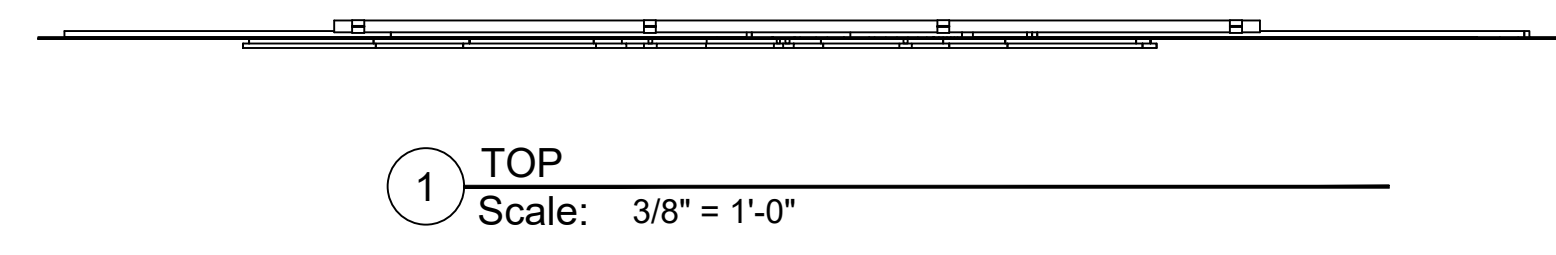


NOTE:

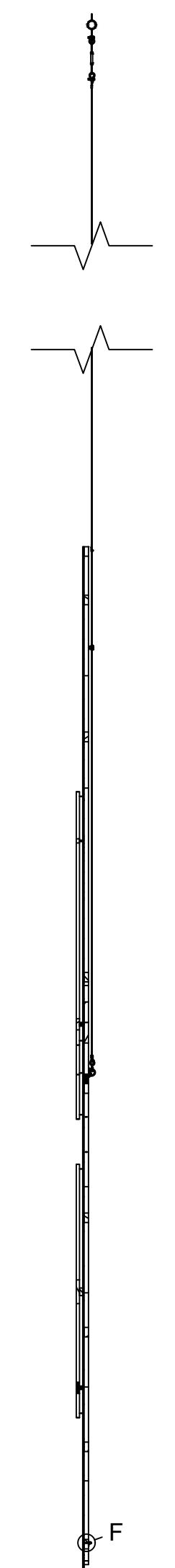
- When locating holes for bolts in rigging hardware, use holes cut into the 1/4" MDF skin as part of CNC profile
- For more information about Milliken framing, see page 5
- For more information about windows, see page 6

CNC PROFILE IS
IN SHOW FOLDER

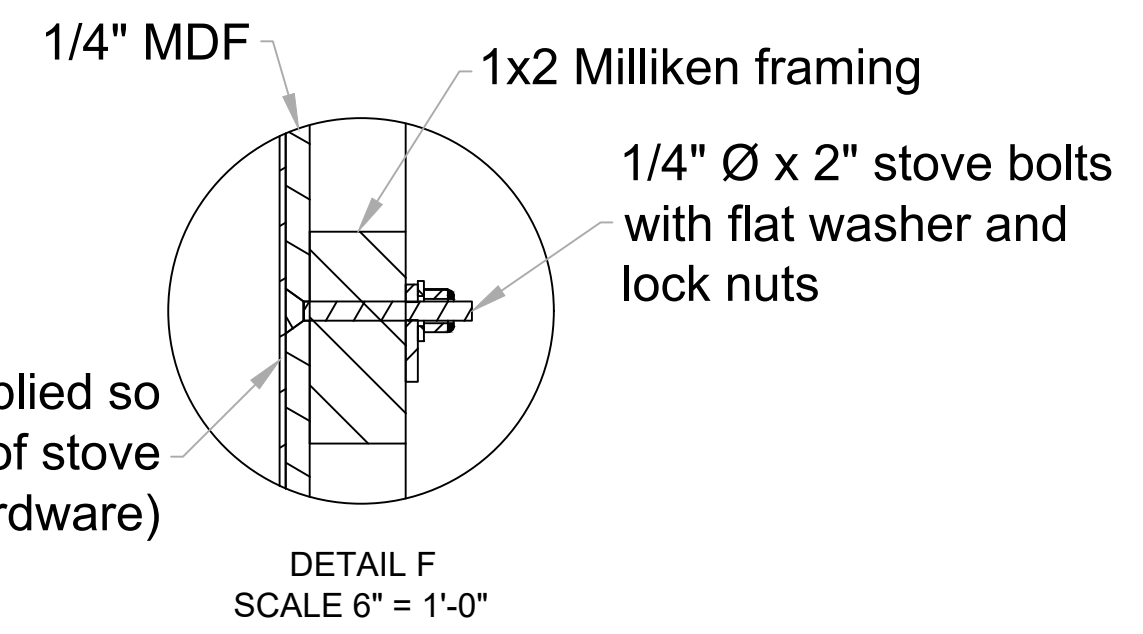
1 TOP
Scale: 3/8" = 1'-0"



2 FRONT
Scale: 3/8" = 1'-0"

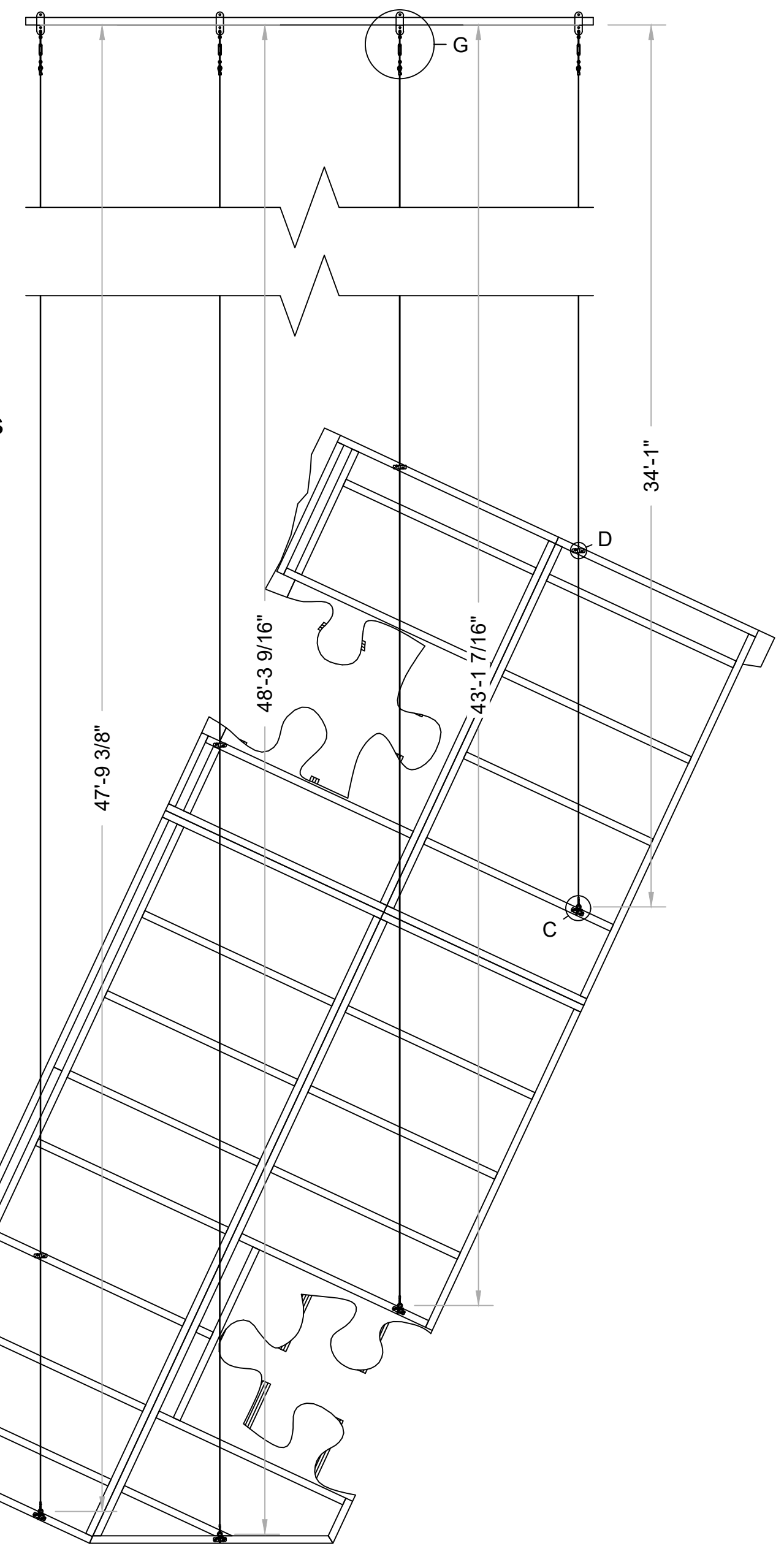


SECTION E-E
SCALE 3/8" = 1'-0"

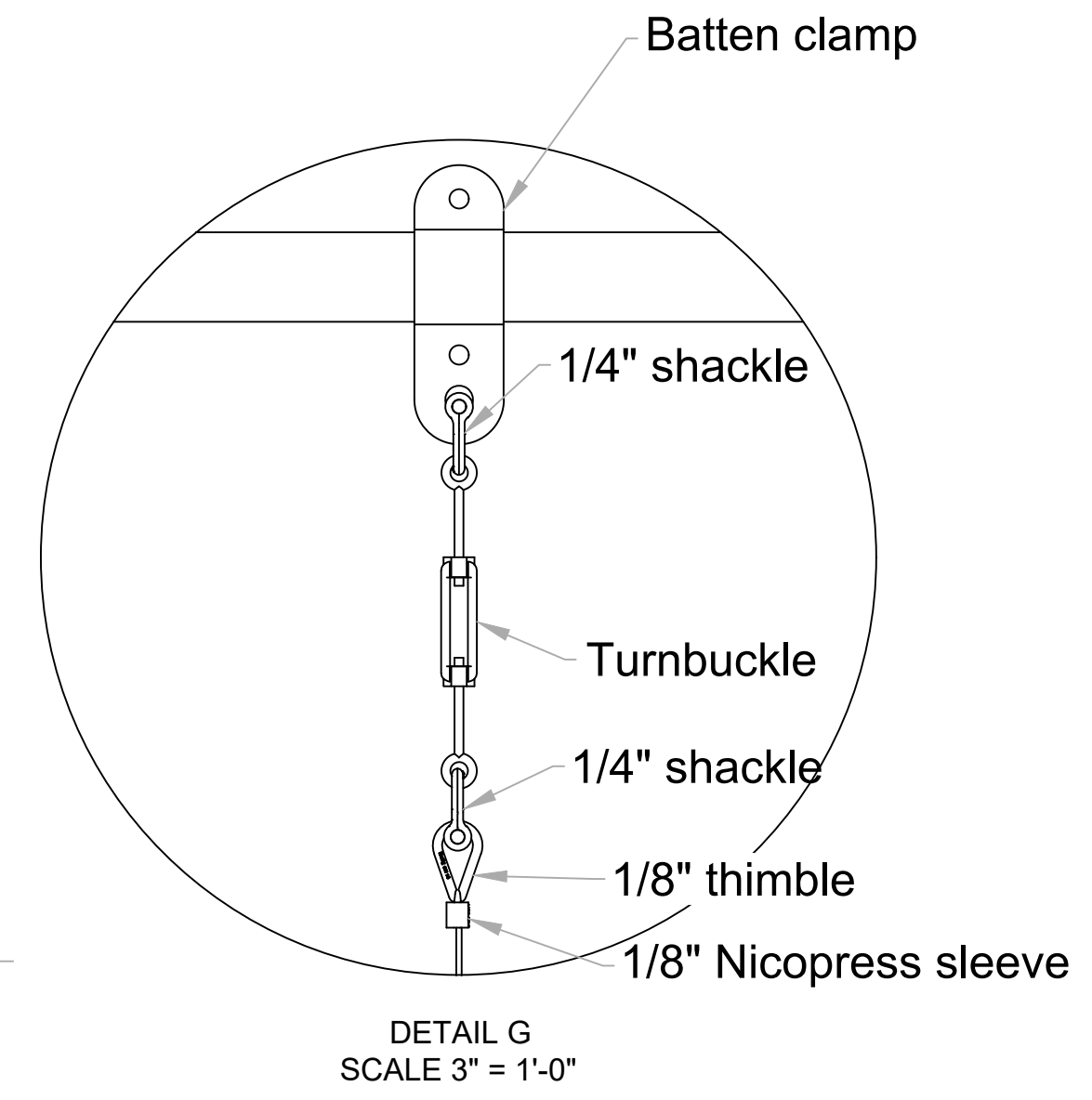


DETAIL F
SCALE 6" = 1'-0"

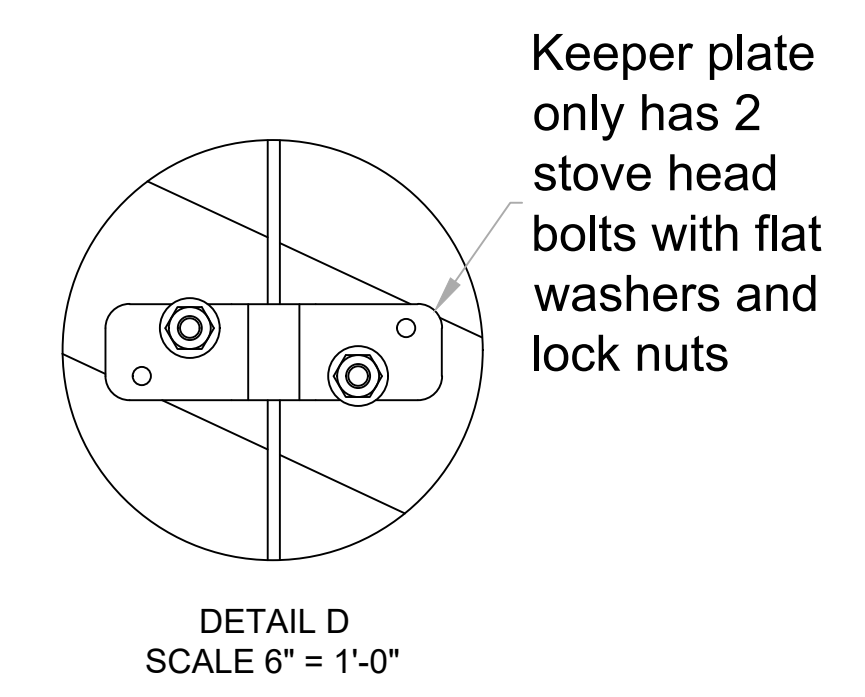
Printed banner (applied so it covers heads of stove bolts in rigging hardware)



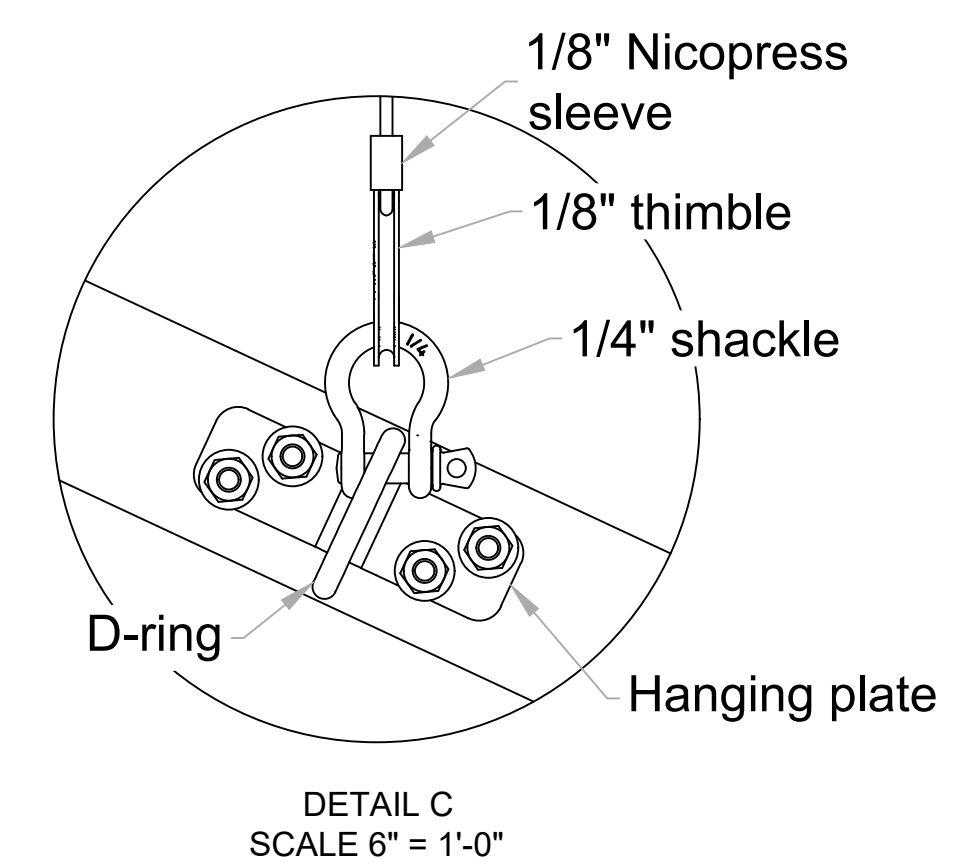
3 BACK
Scale: 3/8" = 1'-0"



DETAIL G
SCALE 3" = 1'-0"



DETAIL D
SCALE 6" = 1'-0"



DETAIL C
SCALE 6" = 1'-0"