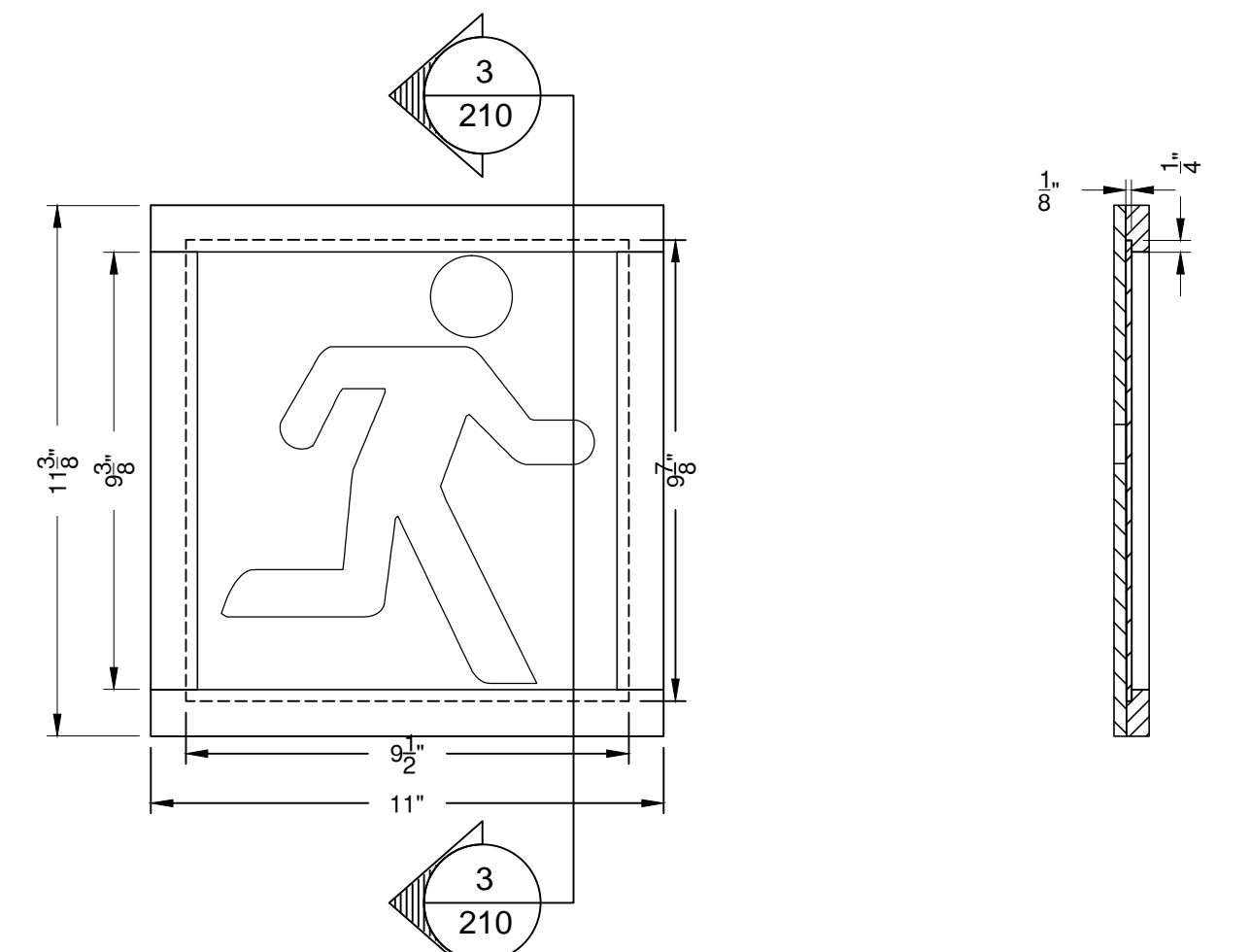
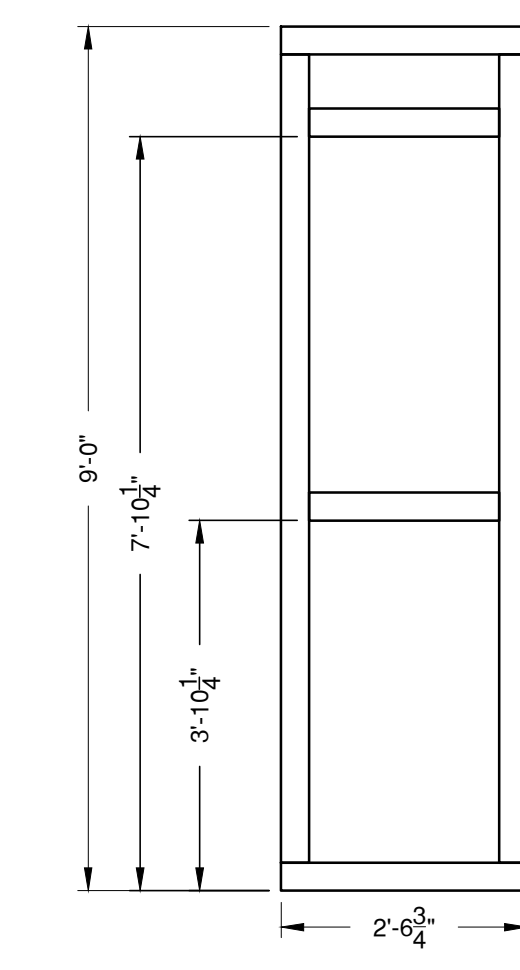
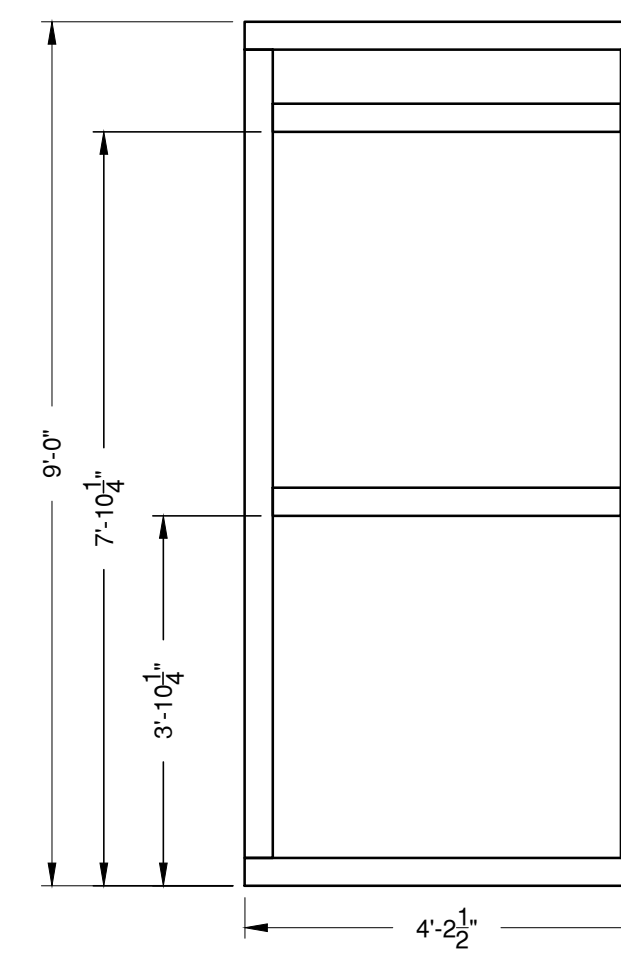
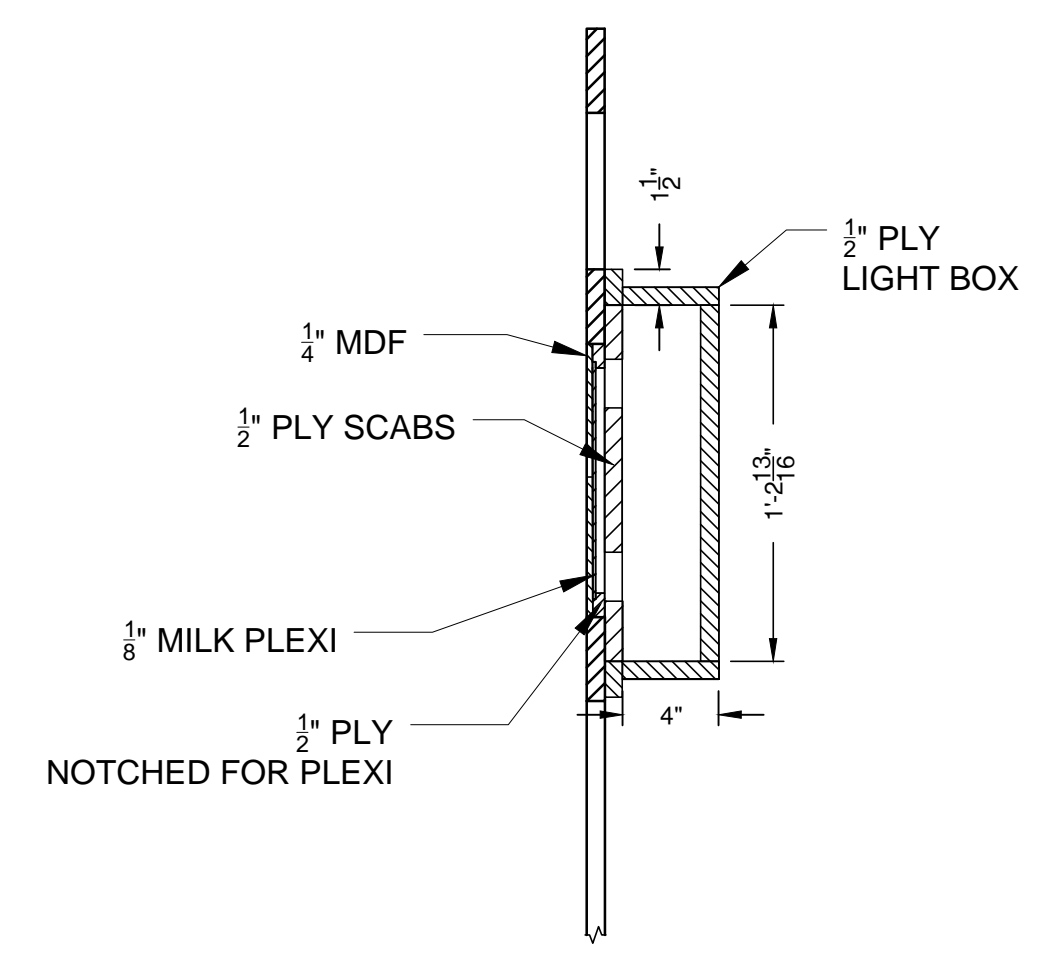
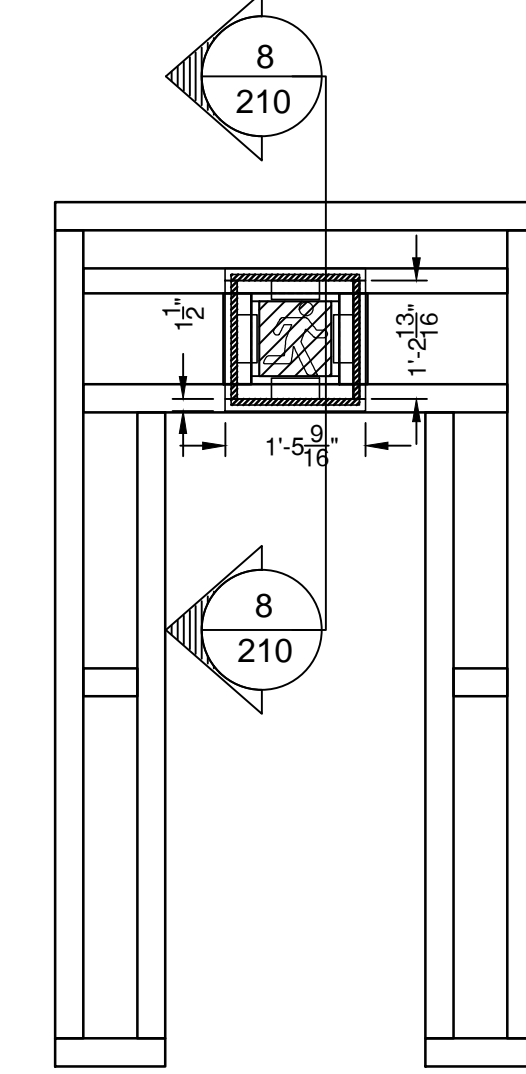
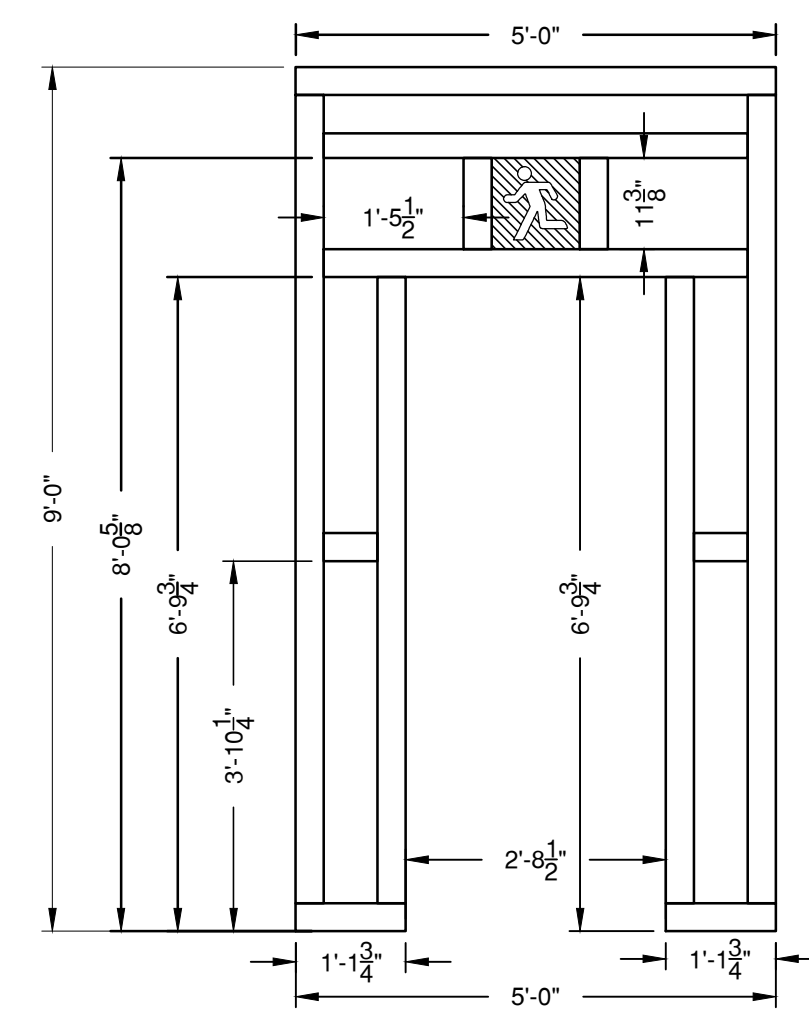
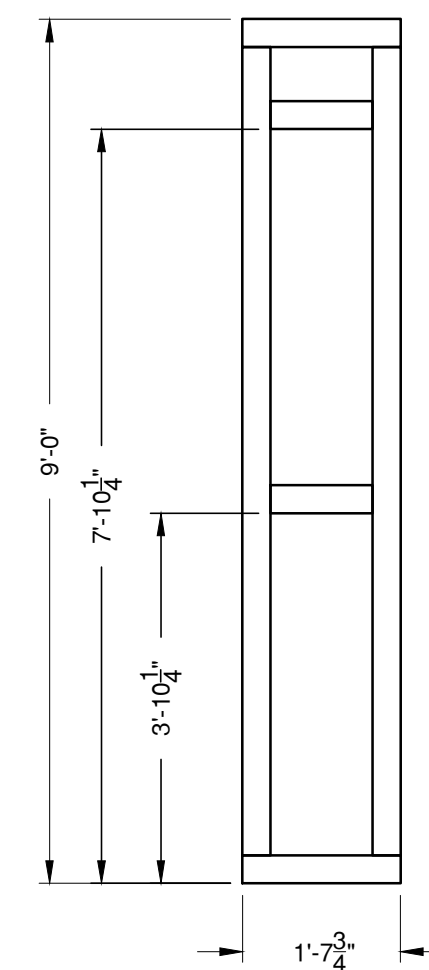
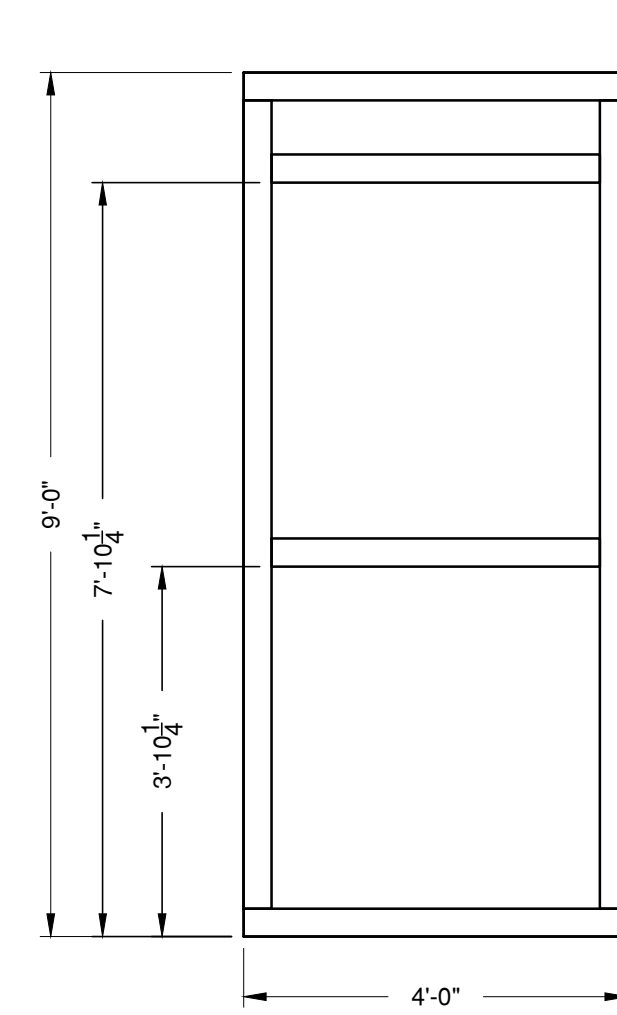


1 STAGE RIGHT GALLERY WALLS - FRONT ELEVATION 1/2" = 1'-0"
210 BUILD 14; REPEAT FOR STAGE LEFT (28 TOTAL)
1X4 FRAMES WITH CORNER BLOCKS AND KEYSTONES; WRAP AND STAPLE WITH MUSLIN
FLATS ATTACH TO GALLERY RAILING WITH CONDUIT CLAMPS
FLATS ATTACH TO EACH OTHER WITH PLYWOOD SCABS
SCREW INTO SCABS FROM FRONT



3 REAR VIEW AND SECT VIEW OF INSERT IN SR5 & SR11 3" = 1'-0"
210 1/4" MDF WILL BE LASER CUT BY DESIGNER
RIP 1/2" PLY TO 1" WIDE
CUT 1/4" X 1/8" NOTCH IN PLYWOOD TO HOLD PLEXIGLASS
INSERT IN FRAMES BEFORE THEY ARE COVERED WITH MUSLIN
SPRAY MDF WITH SUPER 77 WHEN ATTACHING MUSLIN (TEST FIRST)
USE MDF AS A GUIDE TO CUT SAME FIGURE MUSLIN



4 SR1 THRU SR3, SR6 THRU SR9, SR12, SR 13
210 BUILD 9
REPEAT FOR SL
18 TOTAL 1/2" = 1'-0"

5 SR4
210 BUILD 1
REPEAT FOR SL
2 TOTAL 1/2" = 1'-0"

6 SR5 & SR11 - FRONT ELEVATION
210 BUILD 2
REPEAT FOR SL
4 TOTAL 1/2" = 1'-0"

7 SR5 & SR11 - REAR ELEVATION
210 ATTACH INSERT WITH PLYWOOD SCABS 1/2" = 1'-0"

8 SR5 & SR11 - SECTION VIEW
210 ASSEMBLE LIGHT BOX
SEND TO PAINT
ATTACH LIGHT BOX TO FRAME DURING LOAD-IN 1/2" = 1'-0"

9 SR10
210 BUILD 1
REPEAT FOR SL
2 TOTAL 1/2" = 1'-0"

10 SR14
210 BUILD 1
REPEAT FOR SL
2 TOTAL 1/2" = 1'-0"

THE VISIT
TOP SKYWALLS - SR AND SL

14 BROADWAY FLATS BUILT OF 1X4 AND COVERED WITH MUSLIN. TO BUILD SL GALLERY WALLS, REVERSE AND REPEAT ALL FLATS IN THIS DRAWING.

FILENAME: G:\Productions\School Shows\YSD1 The Visit\Scenery\01-Drafting\210-Top SkyWall\210-Top SkyWall SR.dwg

DIRECTOR:	COLE LEWIS
DESIGNER:	CHIKA SHIMIZU
TD:	CHRISTINA KERYCZYNSKYJ
DWG DATE:	09/09/2013
REV DATE:	
REV #:	

210
DESIGN REF SHEET #
009-210

SCALE: ELISE MASUR
AS SHOWN