

# BUILD 6

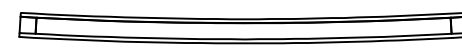
Quantities shown here are for one unit

CNC PROFILE TO COME FROM GRAPHICS DEPT

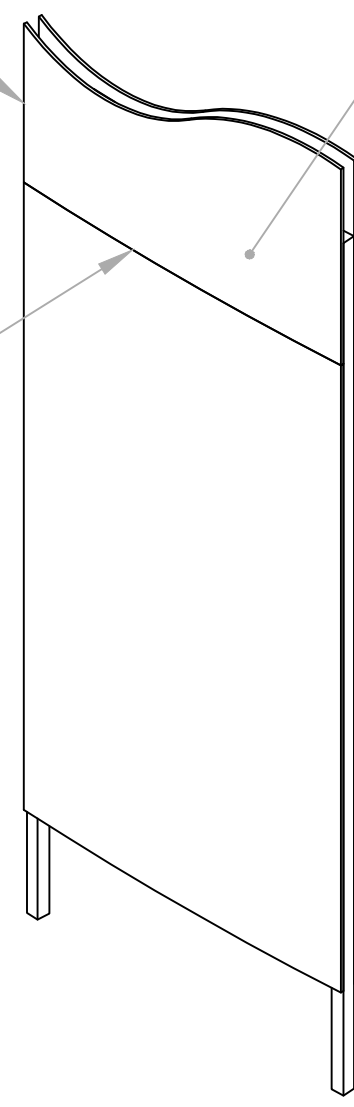
Frame is 1"x1"x1/8" aluminum tube with 1/4" MDF skin on front and back; cover unit with standard white laminate; finish is adhesive vinyl with printed graphics

Seam in 1/4" MDF skin runs horizontally

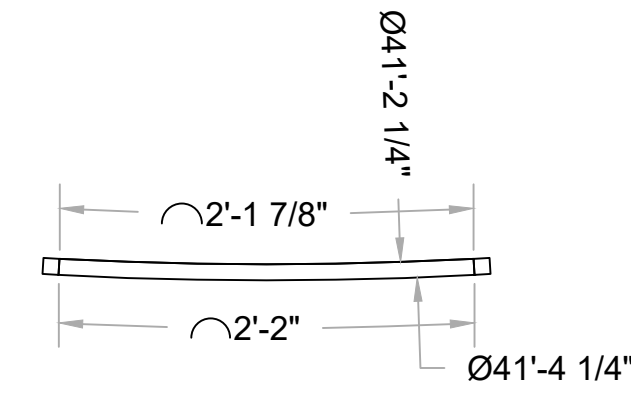
For graphic sizes, see page 7



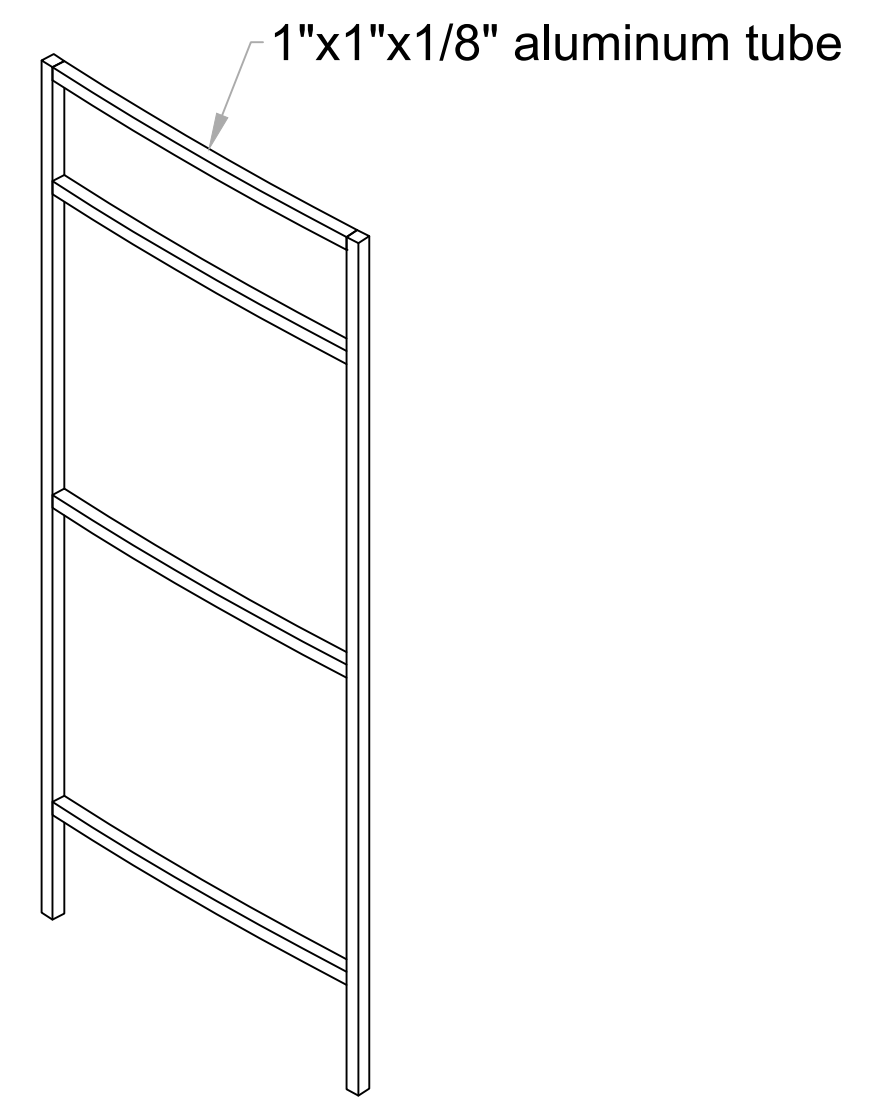
1 TOP  
Scale: 1" = 1'-0"



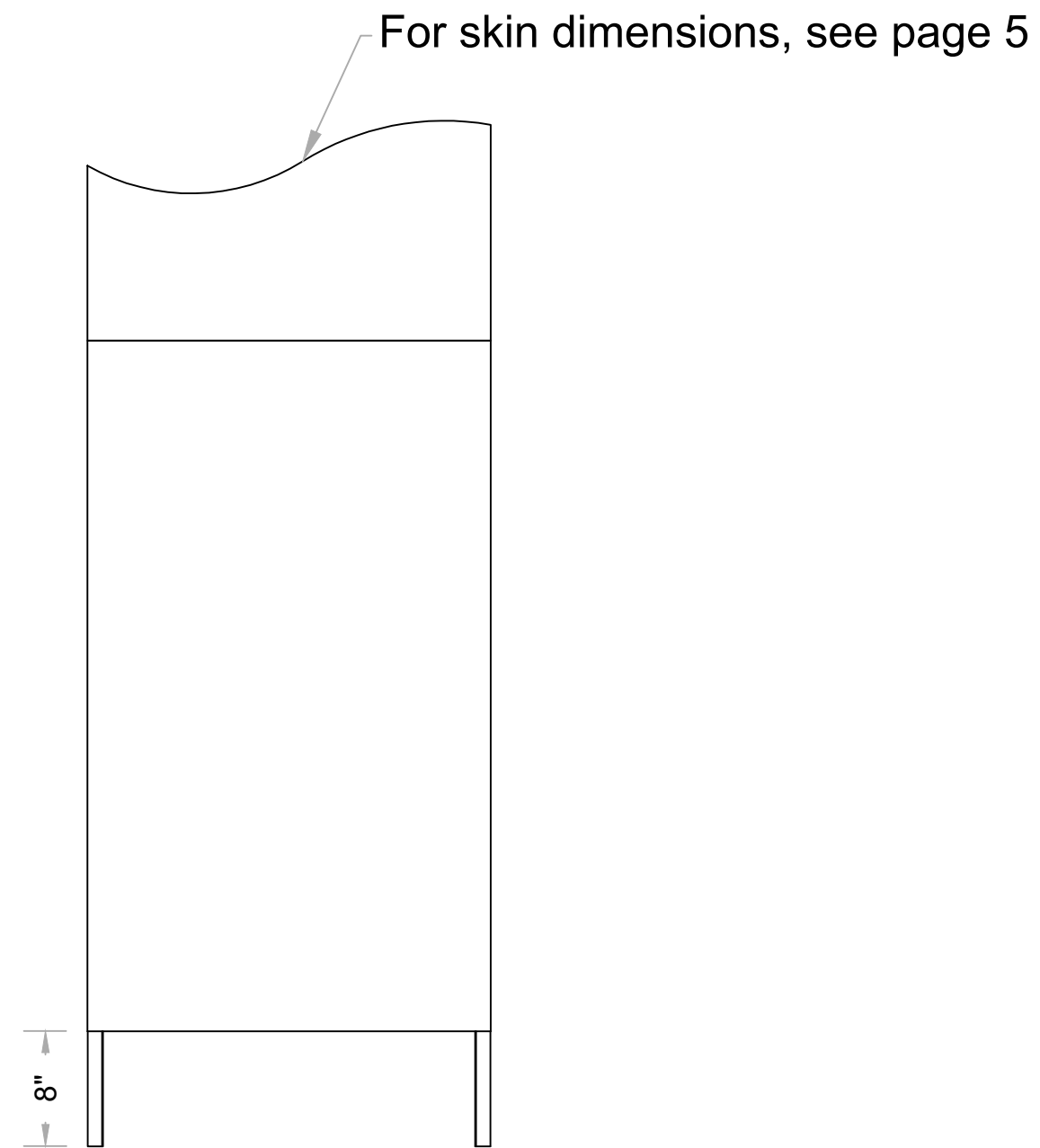
4 FRONT ISO  
Scale: NTS



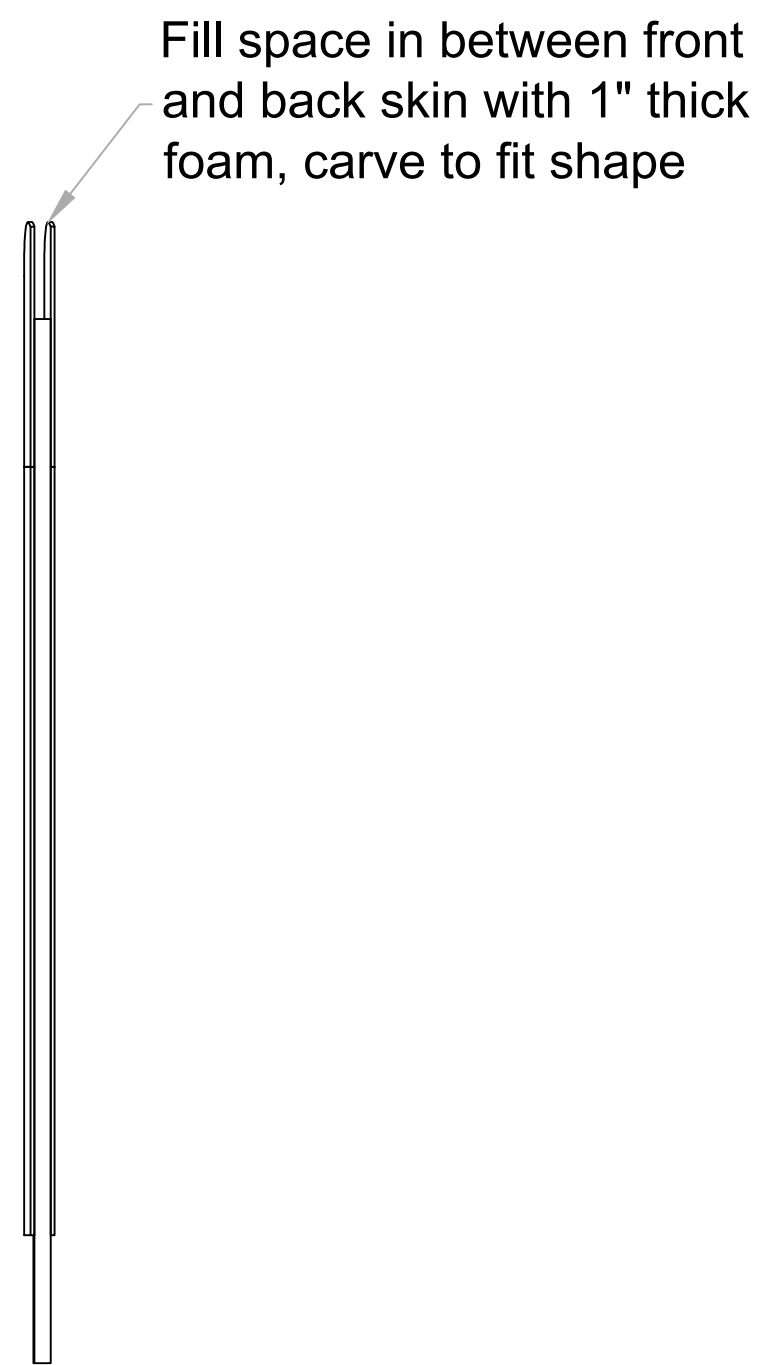
5 TOP  
Scale: 1" = 1'-0"



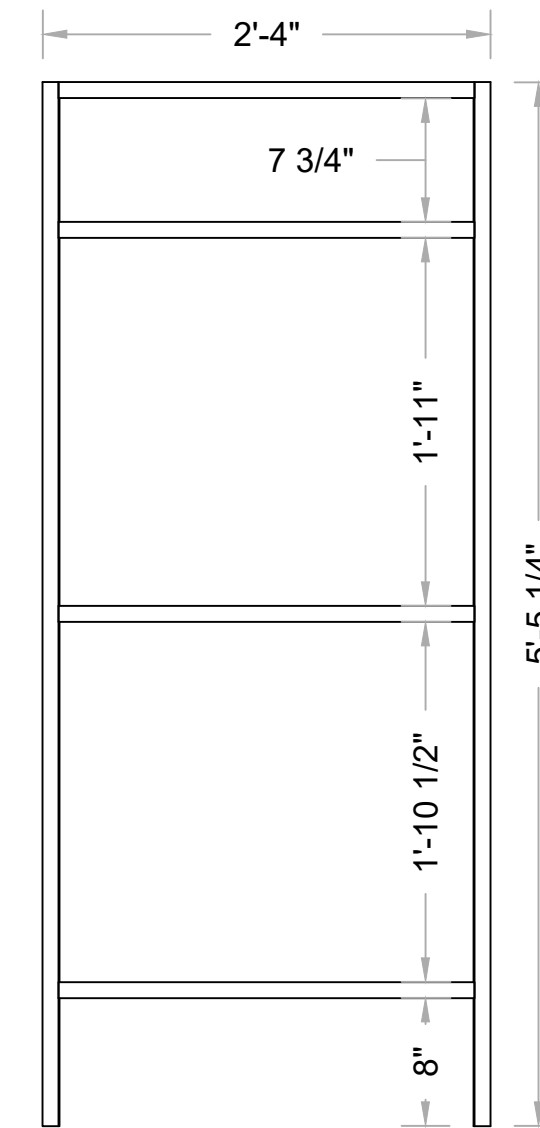
8 FRONT ISO  
Scale: NTS



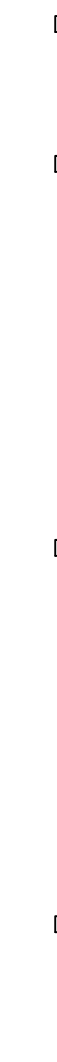
2 FRONT  
Scale: 1" = 1'-0"



3 RIGHT  
Scale: 1" = 1'-0"



6 FRONT  
Scale: 1" = 1'-0"



7 RIGHT  
Scale: 1" = 1'-0"