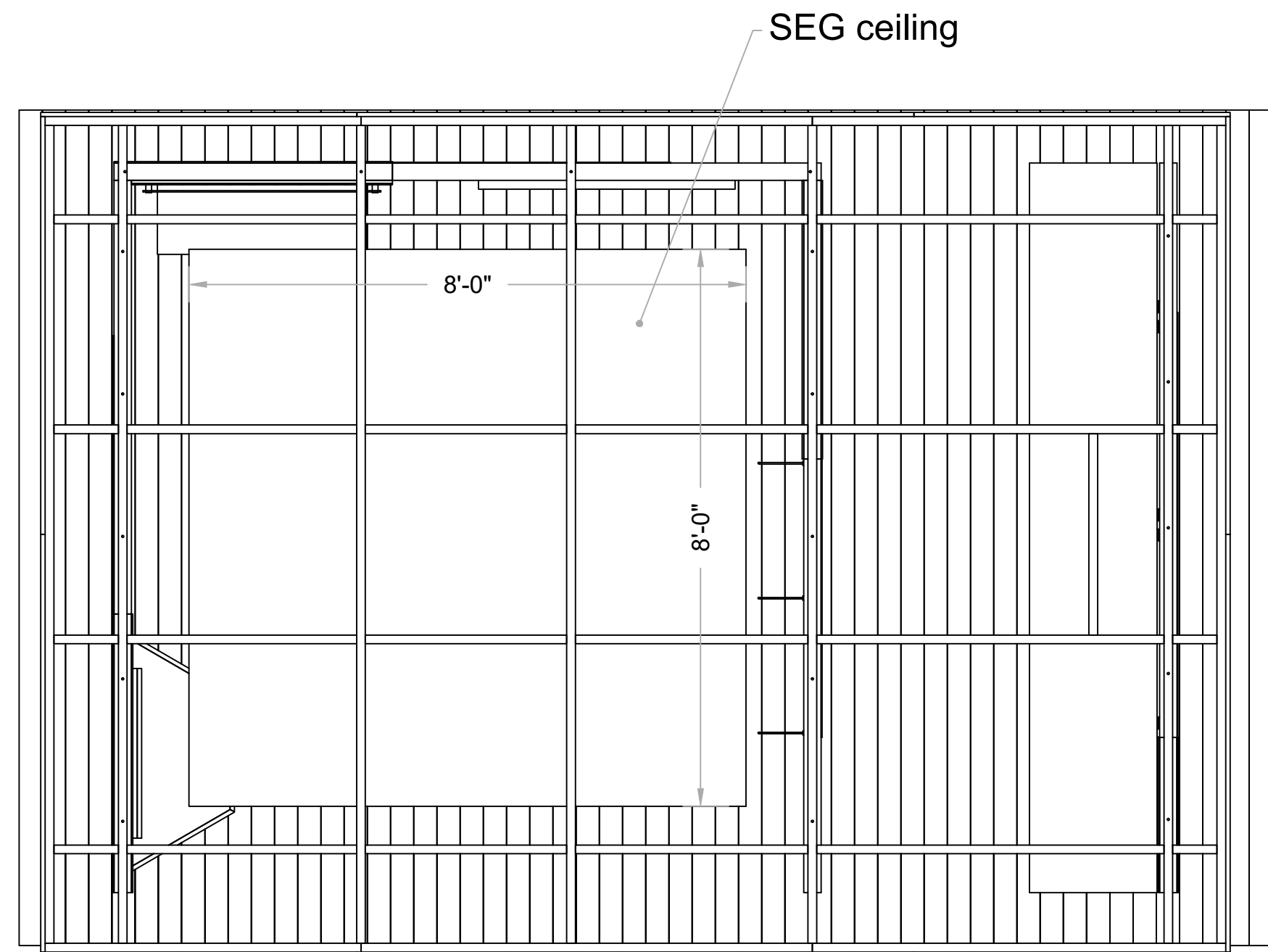


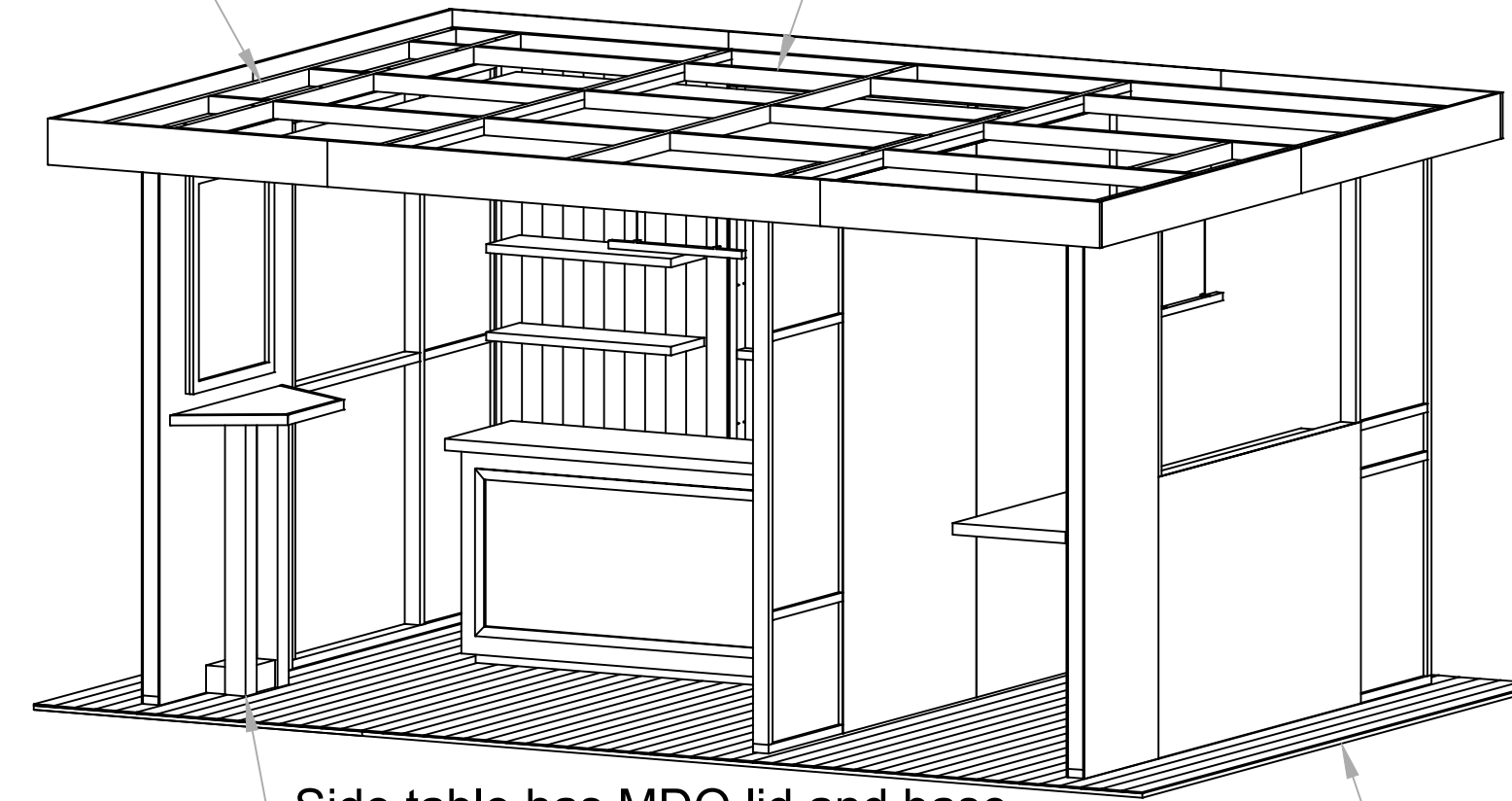
Waterproof LED modules (# EL-M2835-3-DW) around perimeter

Ceiling is 1-1/2"x3"x1/8" aluminum tube frames, powder coated white with exposed fasteners

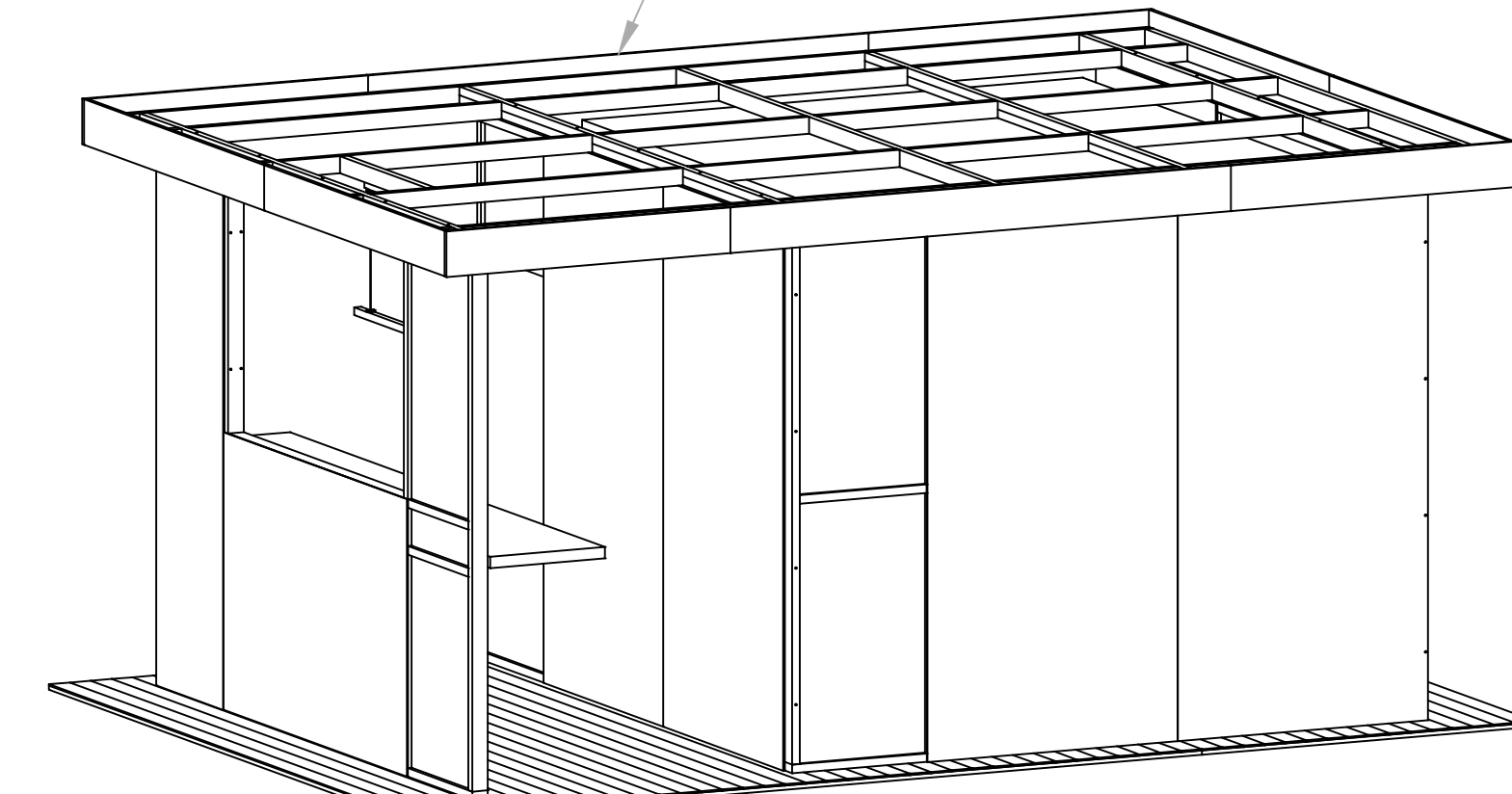
3/4" Extria with laminated finish; Lamin-Art #9215-E Carbon Black Laminate / Vellum Finish



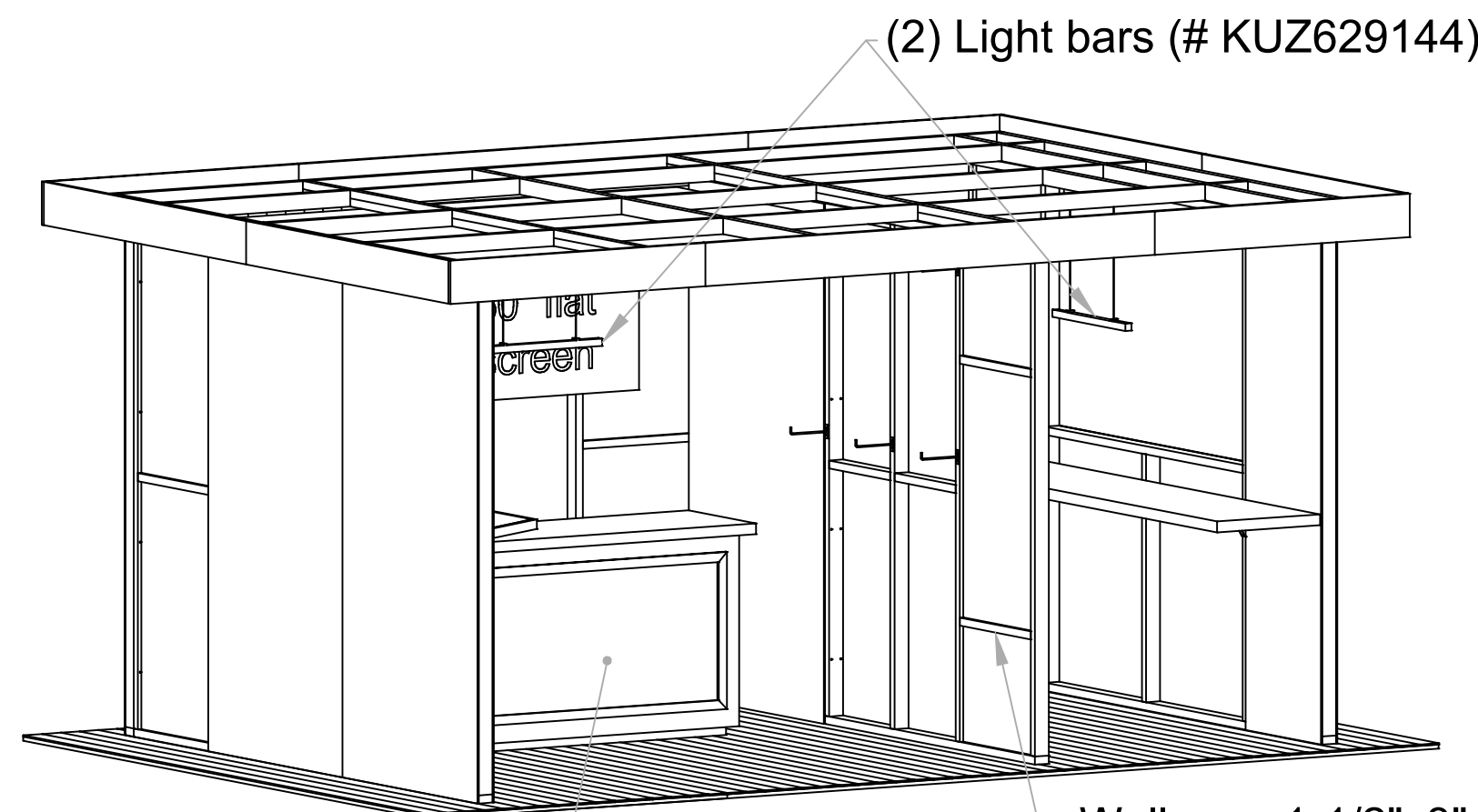
1 TOP
Scale: Custom



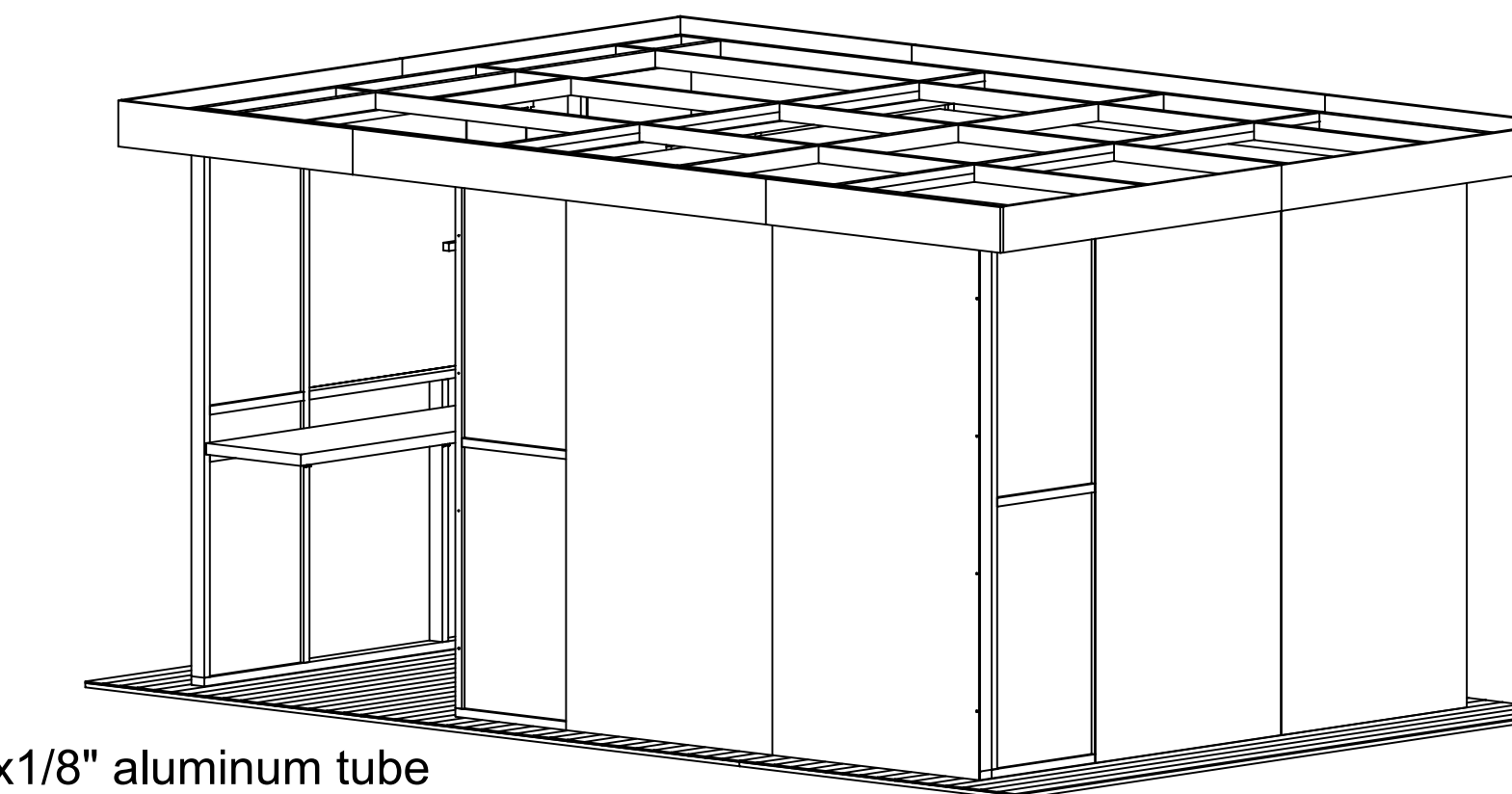
4 FRONT/RIGHT ISO
Scale: NTS



6 REAR/RIGHT ISO
Scale: NTS



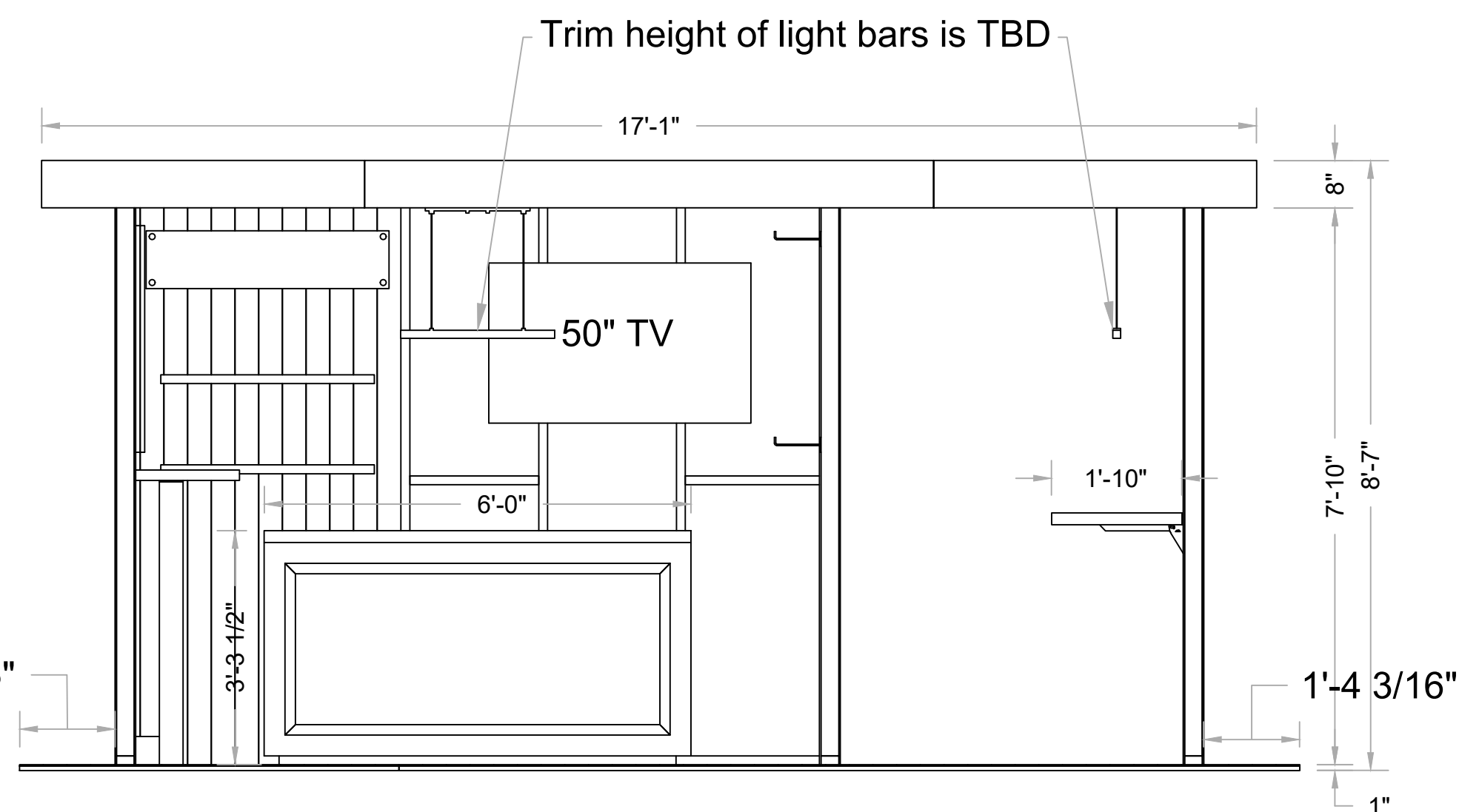
5 FRONT/LEFT ISO
Scale: NTS



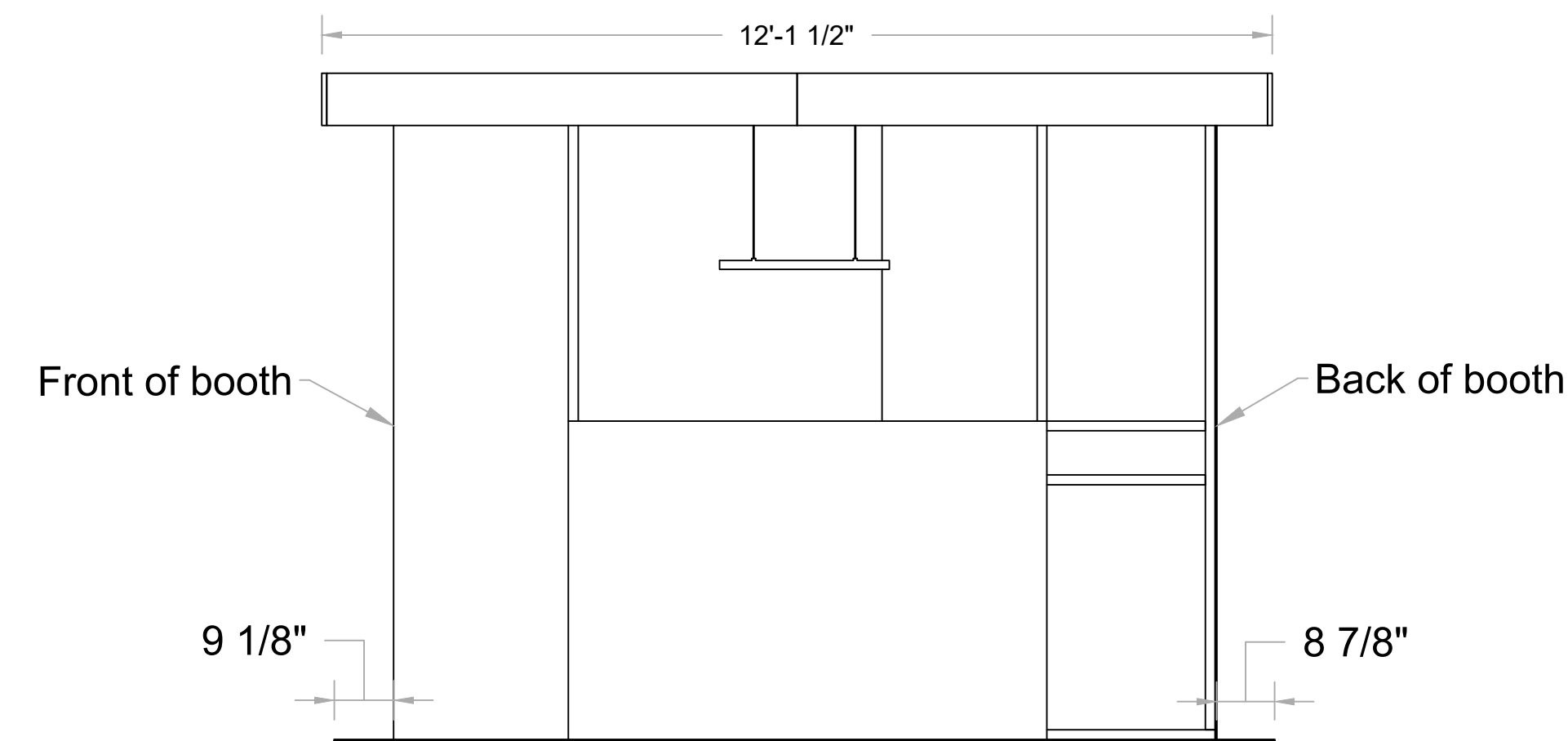
7 REAR/LEFT ISO
Scale: NTS

Serving counter is MDO construction; graphic is interchangeable; frame around graphic has integrated LED lighting

Walls are 1-1/2"x3"x1/8" aluminum tube frames, powder coated with exposed fasteners; skins are 1/4" material with varying finishes (see detail pages)



2 FRONT
Scale: Custom



3 RIGHT
Scale: 1/2" = 1'-0"