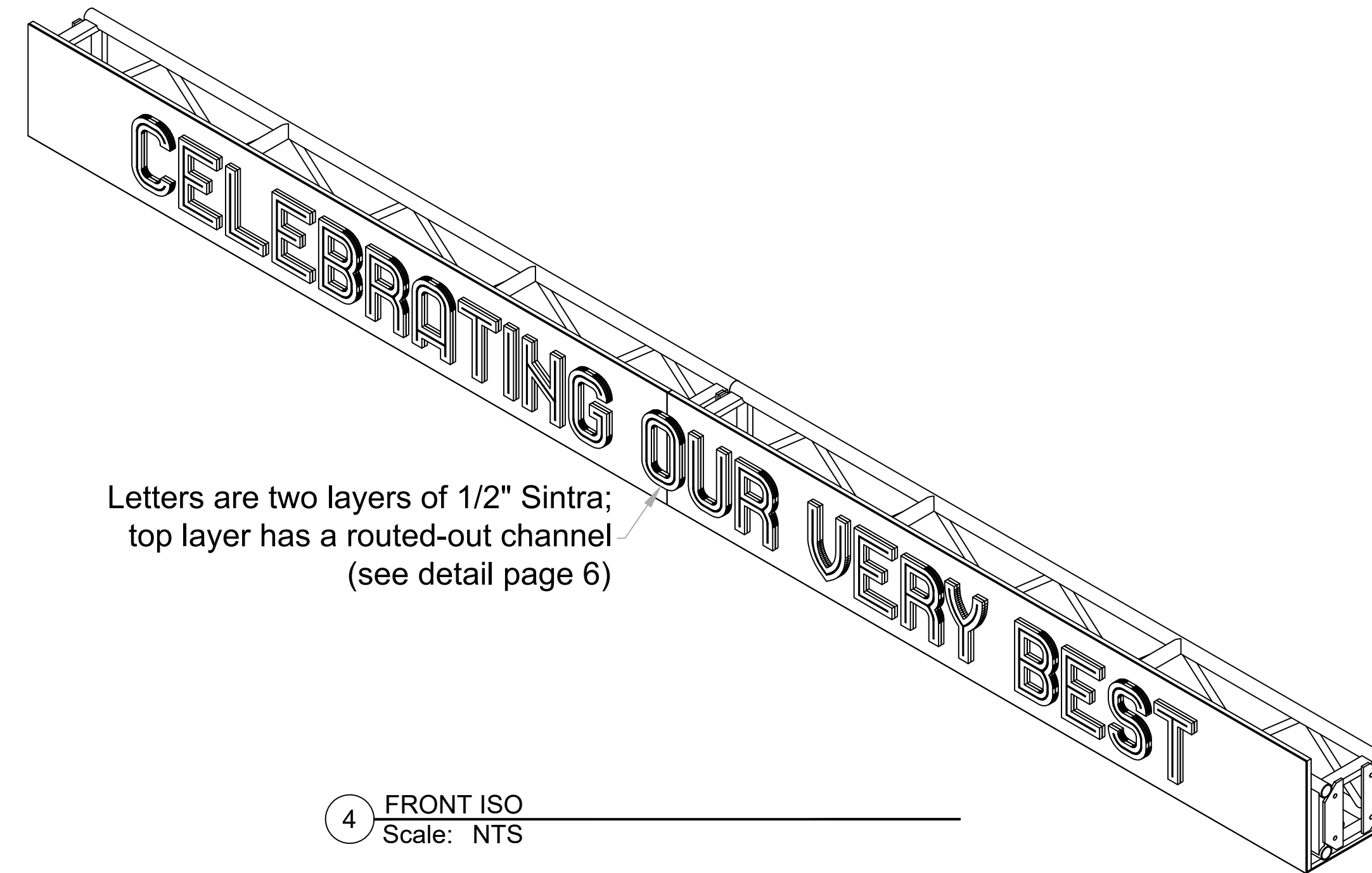
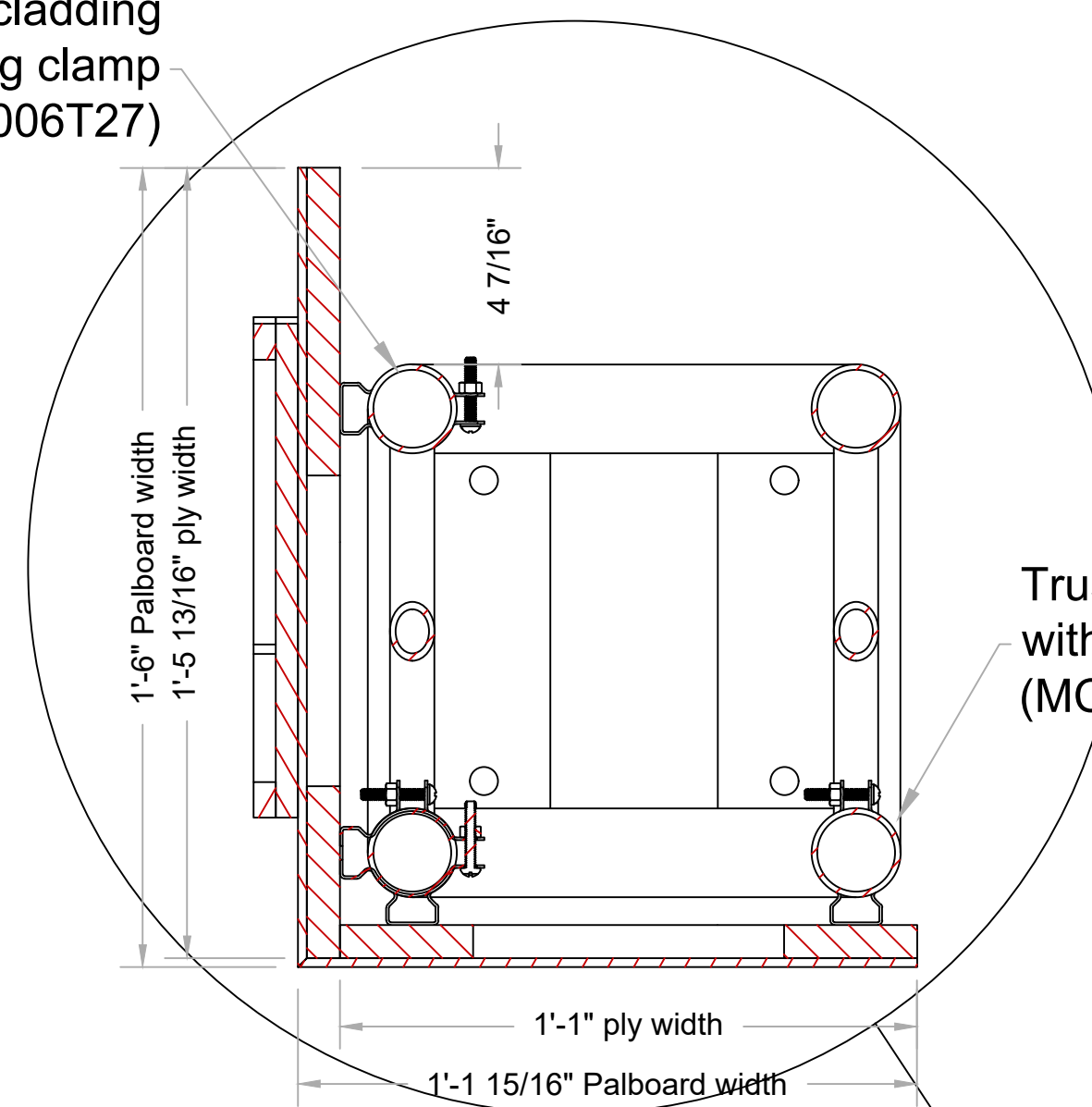


1 TOP  
Scale: 3/4" = 1'-0"



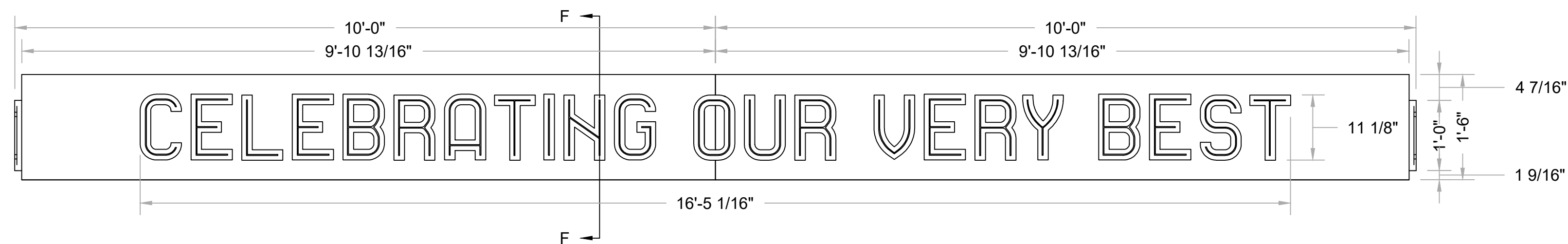
4 FRONT ISO  
Scale: NTS

Truss attaches to cladding with conduit hanging clamp (MC #3006T27)



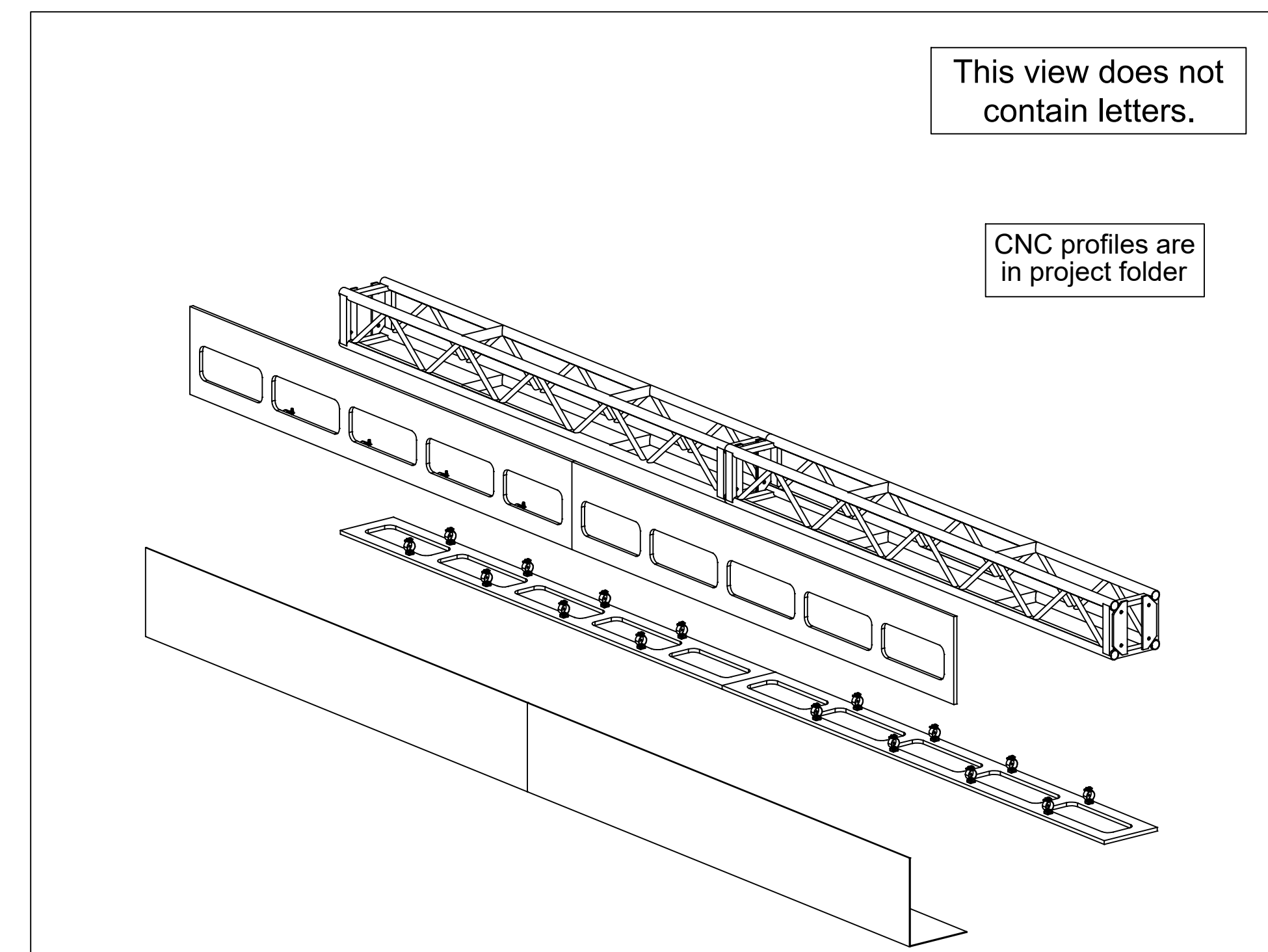
Truss attaches to cladding with conduit hanging clamp (MC #3006T27)

DETAIL G  
Scale: 3" = 1'-0"



2 FRONT  
Scale: 3/4" = 1'-0"

3 SECTION F-F  
Scale: 3/4" = 1'-0"



5 SEPARATED ISO  
Scale: NTS